

BEAUFORT COUNTY, SC

FEMA-4286-DR | SC - HURRICANE MATTHEW

ROW COLLECTION

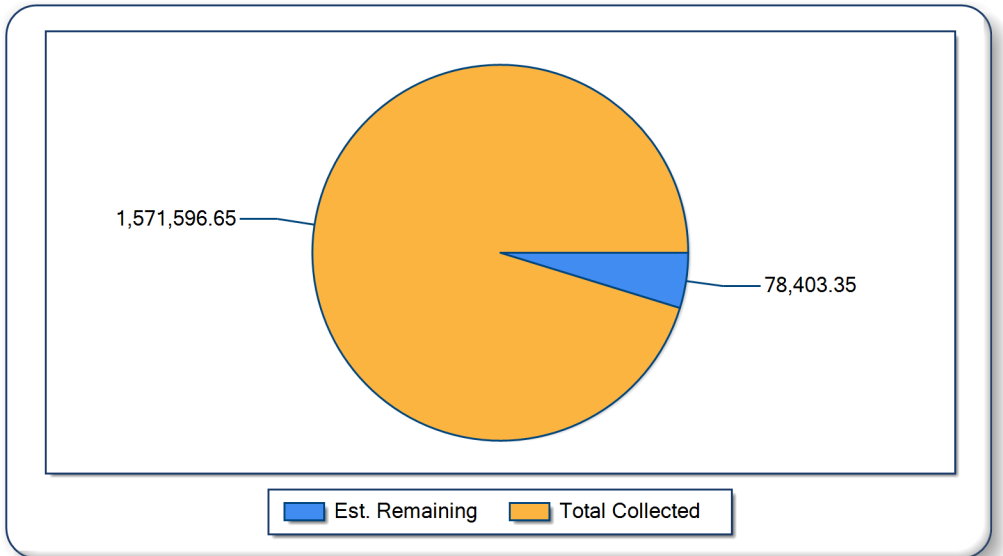
Daily Totals

Daily Statistics (03/13/2017)

CuYds Collected Vs. Remaining

Total Cubic Yards  
 VEGETATIVE/WOODY  
 Total Loads  
 Total Trucks Operating  
 Average CuYds Per Load  
 Average Load Call  
 Disposal Sites in Operation

629  
 629  
 12  
 2  
 52.41  
 90.00%  
 1



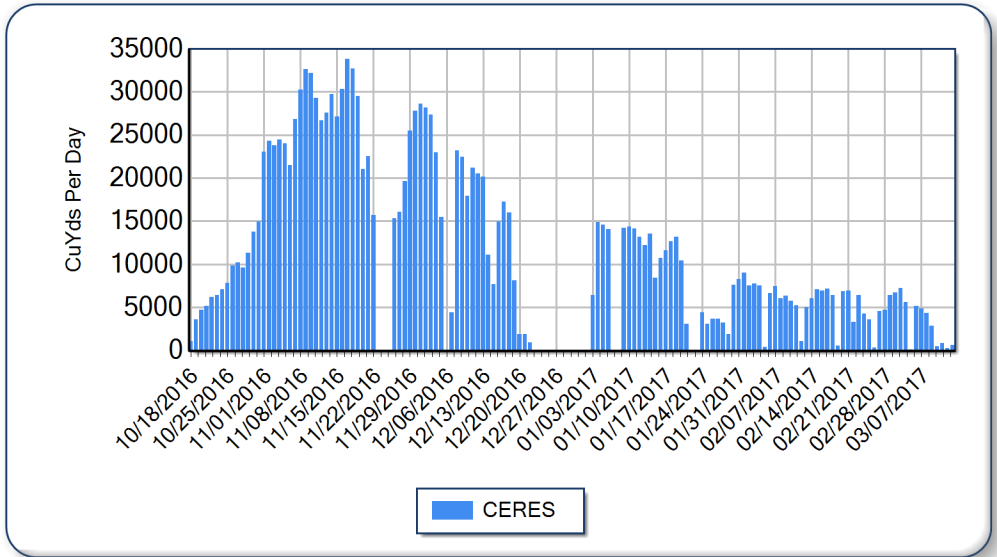
\*All figures are estimates pending reconciliation

Project Totals

Job to Date Statistics

Total CuYds Per Day

Total Cubic Yards	1,571,597
Total Loads	32,294
Days Operational	128
Average Cubic Yards Per Load	49
Maximum Day Cubic Yards	33,776
Average Day Cubic Yards	12,278
Average Load Call	78.85%



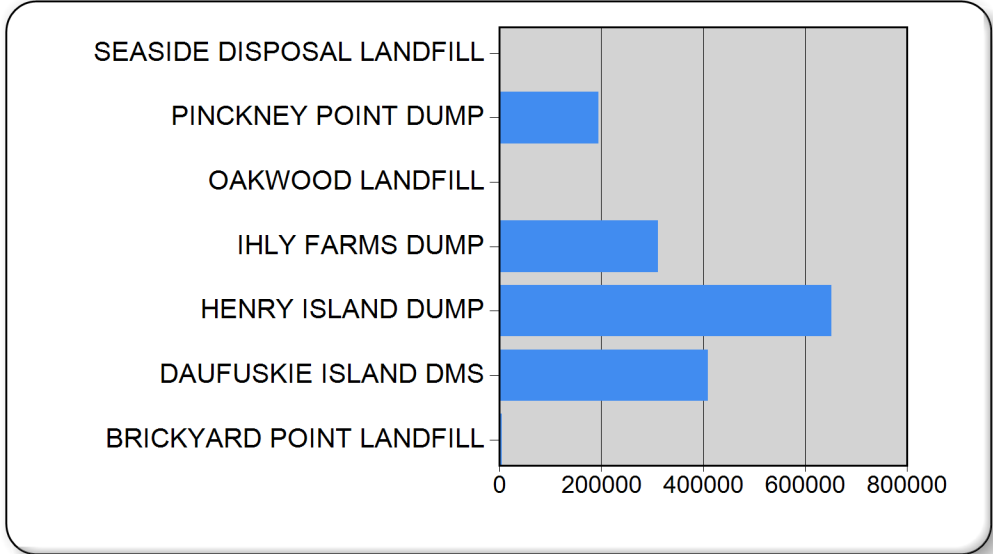
\*All figures are estimates pending reconciliation

Debris Management Sites

Today and Job to Date DMS Statistics

DMS CuYds To Date

<u>Site Name</u>	<u>Today</u>	<u>JTD</u>
<b>BRICKYARD POINT LANDFILL</b>	<b>0.0</b>	<b>4,902.9</b>
CONSTRUCTION&DEMOLITION	0.0	4,902.9
<b>DAUFUSKIE ISLAND DMS</b>	<b>0.0</b>	<b>408,880.9</b>
VEGETATIVE/WOODY	0.0	408,880.9
<b>HENRY ISLAND DUMP</b>	<b>628.9</b>	<b>651,377.9</b>
VEGETATIVE/WOODY	628.9	651,377.9
<b>IHLY FARMS DUMP</b>	<b>0.0</b>	<b>311,497.6</b>
VEGETATIVE/WOODY	0.0	311,497.6
<b>OAKWOOD LANDFILL</b>	<b>0.0</b>	<b>844.4</b>
CONSTRUCTION&DEMOLITION	0.0	844.4
<b>PINCKNEY POINT DUMP</b>	<b>0.0</b>	<b>193,878.1</b>
VEGETATIVE/WOODY	0.0	193,878.1
<b>SEASIDE DISPOSAL LANDFILL</b>	<b>0.0</b>	<b>215.1</b>
VEGETATIVE/WOODY	0.0	215.1



\*All figures are estimates pending reconciliation