

Beaufort County
Hurricane Matthew
Recovery Briefing
February 20, 2017
(Day 136)

A Report to Beaufort County Council



Outline

- Debris Removal
 - Road (public and private)
 - Marine
 - Stormwater
- Damage Assessment
 - Private Property
 - County Facilities
- Public Assistance funding
- Status of County Operations
- Individual Assistance funding
 - Human Services assistance to the public



Public Road Debris

- As of February 15, 2017:
 - 1,463,690 CY collected from Public Roads (30,184 loads)
 - 36,310 CY estimated remaining *
 - As high as 122 trucks operating; currently 17
 - 63,323 hanging limbs removed
 - 3,195 leaning trees removed
 - 1,079 stumps removed
- 102nd day of operation
- Work also includes 27 school campuses and the public roads in 3 municipal areas
- 1st Pass was completed on 12/2/16
- 2nd Pass was considered complete on 12/23/16
- Still on schedule to be complete by end of Feb.

* Based on 1.5 mil. CY to be collected. Does not include stumps, SW and Marine Debris sites



Stumps

- Inventory complete
 - Two categories (within ROW):
 - Extracted = 160
 - In place = 100
 - FEMA advised County all stumps are eligible for removal on January 13, 2017
- Cost is included in current task orders
- Actual Number exceeded 1,000 stumps (see debris report)



Debris Disposal

- 4 Debris Management Sites
- Ihly Farms Mulch removal
 - 54,416 CY removed
 - 573 loads
- CERES has a contract to use the mulch to construct a firing range in Yemassee. Good example of beneficial re-use of the waste product.



BEAUFORT COUNTY, SC

FEMA-4286-DR | SC - HURRICANE MATTHEW

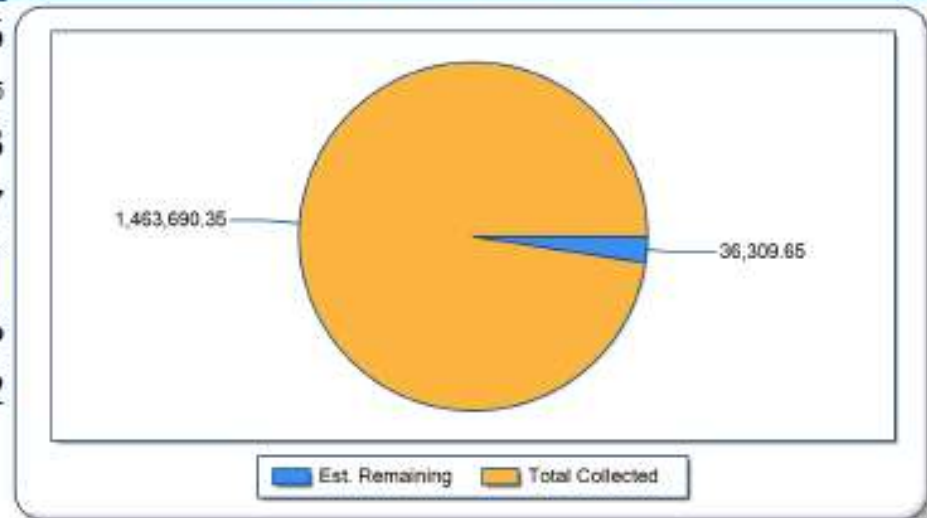
ROW COLLECTION

Daily Totals

Daily Statistics (02/15/2017)

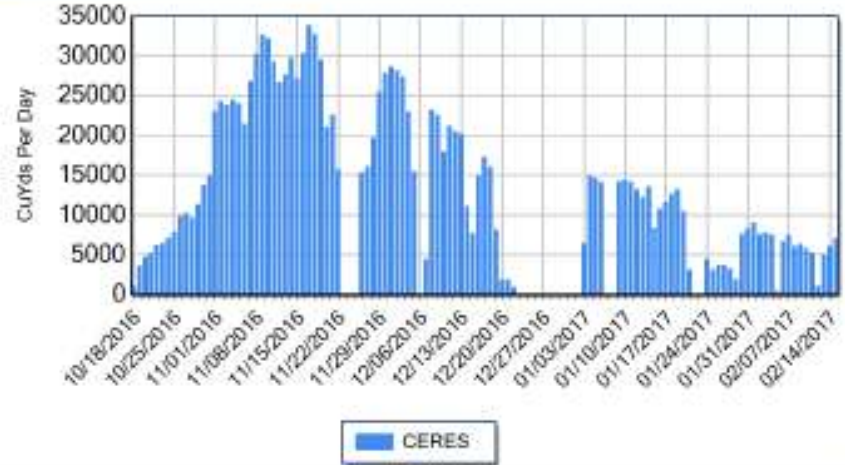
CuYds Collected Vs. Remaining

Total Cubic Yards	7,095
VEGETATIVE/WOODY	7,095
Total Loads	143
Total Trucks Operating	17
Average CuYds Per Load	49.61
Average Load Call	78.22%
Disposal Sites in Operation	2



Project Totals

Job to Date Statistics	Total CuYds Per Day
Total Cubic Yards	1,463,690
Total Loads	30,184
Days Operational	102
Average Cubic Yards Per Load	48
Maximum Day Cubic Yards	33,776
Average Day Cubic Yards	14,350
Average Load Call	78.72%

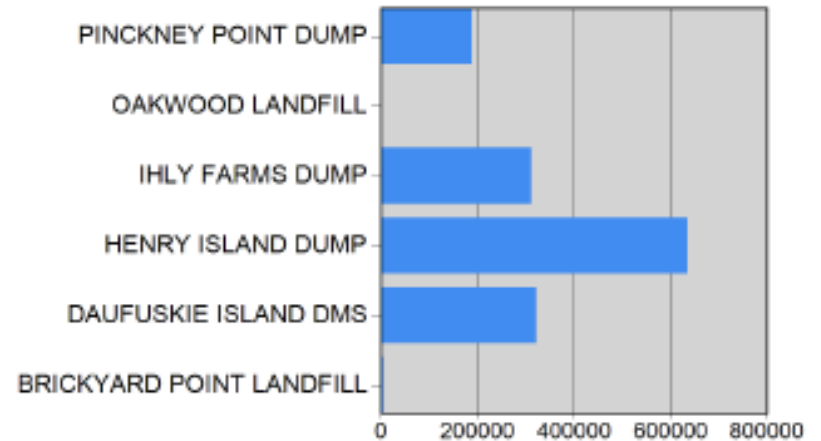


Debris Management Sites

Today and Job to Date DMS Statistics

DMS CuYds To Date

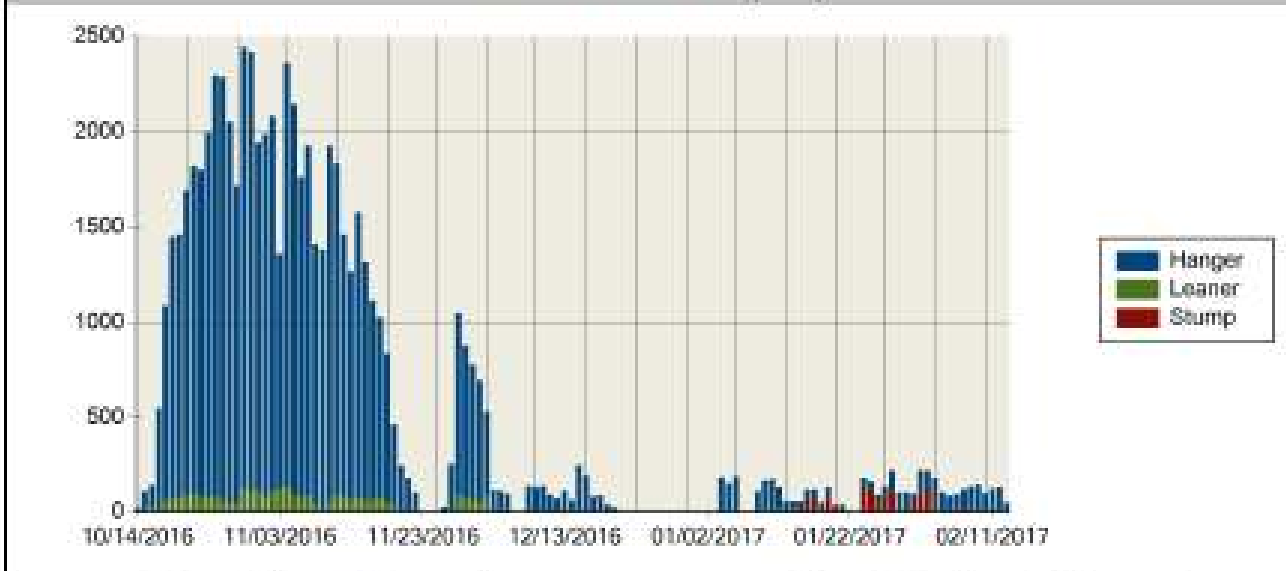
Site Name	Today	JTD
BRICKYARD POINT LANDFILL	0.0	4,902.9
CONSTRUCTION&DEMOLITION	0.0	4,902.9
DAUFUSKIE ISLAND DMS	6,832.2	322,375.4
VEGETATIVE/WOODY	6,832.2	322,375.4
HENRY ISLAND DUMP	262.4	635,443.3
VEGETATIVE/WOODY	262.4	635,443.3
IHLY FARMS DUMP	0.0	311,497.6
VEGETATIVE/WOODY	0.0	311,497.6
OAKWOOD LANDFILL	0.0	844.4
CONSTRUCTION&DEMOLITION	0.0	844.4
PINCKNEY POINT DUMP	0.0	188,627.0
VEGETATIVE/WOODY	0.0	188,627.0



BEAUFORT COUNTY, SC

FEMA-4286-DR | SC - HURRICANE MATTHEW
ROW COLLECTION

Hazard Removals By Day



Today's Hazard Removals

Total Crews in the Field	1
Hangers	Totals
1A-HANGER REMOVAL PER TREE	51
Leaners	Totals
Stumps	Totals

Cumulative Hazard Removal

	<u>Progress to Date</u>		
	<u>Estimated</u>	<u>Completed</u>	<u>Percent</u>
Hanger	0	63,323	0.0 %
Leaner	0	3,166	0.0 %
Stump	0	1,579	0.0 %
Total	0	67,897	

Productivity Statistics

Hanger Removal Maximum	2,313
Hanger Removal Average	827
Hanger Removal Minimum	2
Leaner Removal Maximum	138
Leaner Removal Average	36
Leaner Removal Minimum	1
Stump Removal Maximum	137
Stump Removal Average	67
Stump Removal Minimum	17



Mulch Haulout report

RecoveryTrac Project Haulout Report

Report Period: 01/25/2017 to 02/15/2017

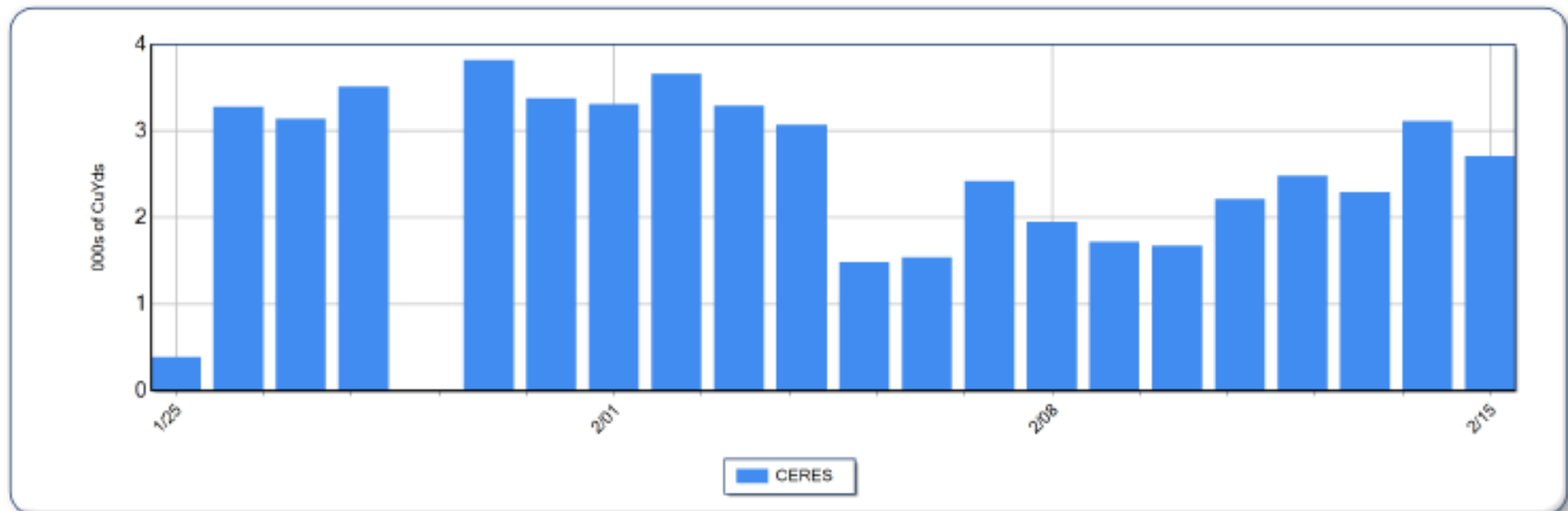
BEAUFORT COUNTY HURRICANE MATTHEW

Current Day (02/15/2017) Statistics

Cumulative - JTD Statistics

DMS	Loads	Avg Load Call	Total Volume	DMS	Loads	Avg Load Call	Total Volume
DAUFUSKIE ISLAND DMS	18	95.6	327	DAUFUSKIE ISLAND DMS	32	92.8	564
IHL Y FARMS DUMP	24	87.3	2,376	IHL Y FARMS DUMP	541	87.7	53,852
Totals:	42		2,703	Totals:	573		54,416

Haulout Debris Removed by Contractor by Day



DMS Monitoring



Air Curtain Incineration



Grinding



Pinckney Point 1/14/17



Pinckney Point 2/5/17



Pinckney Point 2/12/17



Henry Sod Farm 1/14/17



Henry Sod Farm 2/5/17



Henry Sod Farm 2/14/17



Henry Sod Farm 2/14/17



Henry Sod Farm 2/14/17



Ihly Farm 1/14/17



Ihly Farm 1/29/17



Ihly Farm 2/5/17

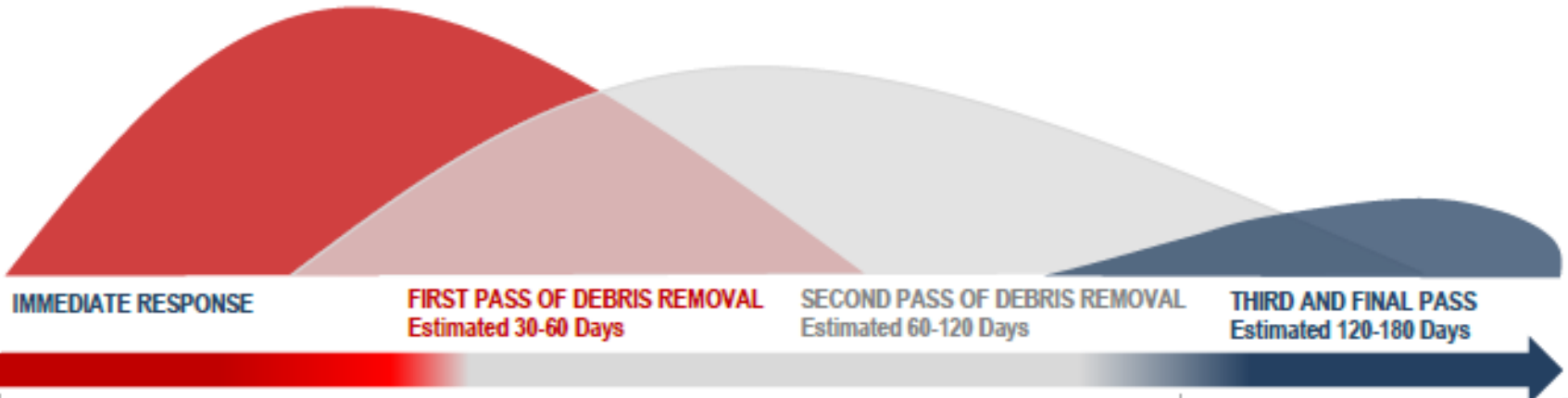


Ihly Farm 2/12/17



Schedule

Matthew
Impact
10.8.16



IMMEDIATE RESPONSE

Activities included:

- Emergency Road Clearing (Push)
- Conduct preliminary damage assessments.
- Identify and assess debris management site
- County activated contracts with pre-positioned debris hauling contractor (Ceres Environmental) and debris monitoring contractors (Tetra Tech)
- Request for Public Assistance made to FEMA through South Carolina Emergency Management Department

FIRST PASS OF DEBRIS REMOVAL Estimated 30-60 Days

Activities include:

- Debris Contractor Ceres has initiated debris removal activities
- All debris removal is being monitored and documented in accordance with FEMA regulations
- Dangerous hanging limbs affecting the public Rights-of-Way are being removed
- Hazardous leaning trees affecting the public rights-of-way are being removed
- Beaufort County has requested a waiver from FEMA to allow debris collection from Rights of Way on Private roads

SECOND PASS OF DEBRIS REMOVAL Estimated 60-120 Days

Activities include:

- Hanging limb and leaning tree removal will be completed
- Contractors will make a second pass of debris removal on all roads
- The County will identify the need for additional debris removal programs ;
 - Waterways
 - Derelict Vessels
 - Parks
- Damage complaints will be signed-off when rectified

THIRD AND FINAL PASS Estimated 120-180 Days

Activities include:

- Third and final pass of debris removal will be made
- Remaining damage complaints will be closed out
- Debris management sites will be remediated
- Contractors will be released

Town of Hilton Head Island Debris

- Separate Contract with Crowder – Gulf
- Estimated total cost for Debris = \$55 mil.
 - 30% Public, 70% Private
 - Expended to date: \$11,264,997 (through 2/8/17)
- Estimated total volume for Debris = 2.5 mil C.Y.
 - Collected to date: 2,054,442 CY (through 2/8/17)
 - Hangers 42,058
 - Leaners 5,301
 - Mulch removed 771,051 CY
 - Sold to paper mill, local farms, Oakwood Landfill, Firewood supply company, Lumber supply company, a hardwood sawmill and to the Port of Savannah for logs to be exported to Ho Chi Minh City, Vietnam



IMPORTANT NOTICE TO THE PUBLIC

- Hurricane Debris Removal Operations Complete for Most of Beaufort County
- ONLY storm debris from October 7 is allowed. CERES is seeing a trend of newer, “green” debris from routine landscape maintenance being set out for collection.



IMPORTANT NOTICE TO THE PUBLIC

- Beaufort County advises residents to immediately **STOP** placing debris at the right-of-way. If you have not placed your debris at the right of way it is too late and the property owner is responsible for removal and proper disposal of any debris. The third and final pass began in most of Beaufort County on Tuesday, Jan. 3. Debris placed at the right-of-way after the third pass is complete for any area will not be picked up by County contractors and is prohibited by FEMA regulations and federal law. Contractors will continue picking up debris previously identified by the debris monitoring firm to complete the third pass in specific areas only.



Public and Private Road Debris

- Residents are asked to sort Class 1 and Class 2 debris into separate piles on the right-of-way at their residence for collection. The separation categories for debris placed at rights-of-way are:
 - Class 1 waste – includes small limbs, leaves and landscape trimmings.
 - Class 2 waste – includes building materials, drywall, lumber, carpet, furniture, mattresses and plumbing items.
- The County advises residents not to block fire hydrants, stormwater ditches or utility boxes when placing items at the right-of-way



Convenience Centers

- All Beaufort County Convenience Centers are accepting limited amounts of non-storm generated yard waste (Class 1)
- Class 1 waste accepted at Convenience Centers includes small limbs and landscape trimmings. Capacity for this material is limited. No trailers or large loads will be accepted. Residents who wish to drop off waste in bags should use paper bags. Plastic bags are prohibited



Private Road Debris (PPDR)

- On October 29, 2016, FEMA approved the County's request to remove debris from private roads
- As of Feb. 10, 2017, FEMA has approved private roads in 76 communities for PPDR. 1 others are pending approval. None to be submitted. 4 withdrawals. 3 denied (driveways)



PPDR as of Feb. 10, 2017

- Battery Point
- Battery Townhomes
- Bay Pointe Vistas
- Beach Field
- Bermuda Bluff
- Bloody Point
- Blue Gray Estate
- Bluffton Park
- Callawassie Island
- Cane Island Retreat
- Cat Island
- Cedar Cove at Haig Point
- Cedar Lake
- Celadon
- Cheechessee Creek
- City Walk
- Coffin Point Plantation
- Colleton River
- Coosaw Point
- Dataw Island
- Distant Island
- Edgefield
- Fernlakes
- Fripp Island POA
- Haig Point Club
- Harbor Island
- Heritage Lakes
- Heyward Point
- Hidden Lakes
- Inlet @ Bermuda Bluff
- Islands of Beaufort
- Liberty Point
- Live Oaks at Battery Creek
- Marshes at Lady's Island
- May River Plantation
- May River Preserve
- Melrose Resort
- Meridian Cottages
- Moss Creek
- Oakridge
- Olde Tabby Park
- Oldfield
- Overlook at Battery Creek
- Picket Fences
- Pinckney Retreat
- Pine Forest Village
- Pleasant Farm
- Pleasant Point
- Polawana Island
- Port Royal Landing
- Ribaut Island
- River House Plantation
- River Oaks
- Rose Dhu Creek
- Rose Hill Plantation
- Sandy Pointe
- Shady Glen
- Shammy Creek Landing
- **South Point**
- Spring Island
- Stock Farm
- Tabby Road
- Tansi Village
- The Crescent
- The Farm at Buckwalter
- Traditions at Old Carolina
- Tuxedo Park
- Victoria Bluff
- Vivian's Island
- Walling Grove
- Wellstone at Bluffton
- Willow Point
- Windmill Harbour
- Wrights Point
- Yacht Club Estate



Pending PPDR 2/10/17

Pending FEMA:

- Palmetto Place

• Withdrawn:

- Hampton Hall Club
- Old Point Townhouse Condo Assoc.
- Shadow Moss
- Westgate Circle

Denied by FEMA:

- Fig Beach Club
- Mariner Horizontal Property
- The Preserve at Woodbridge

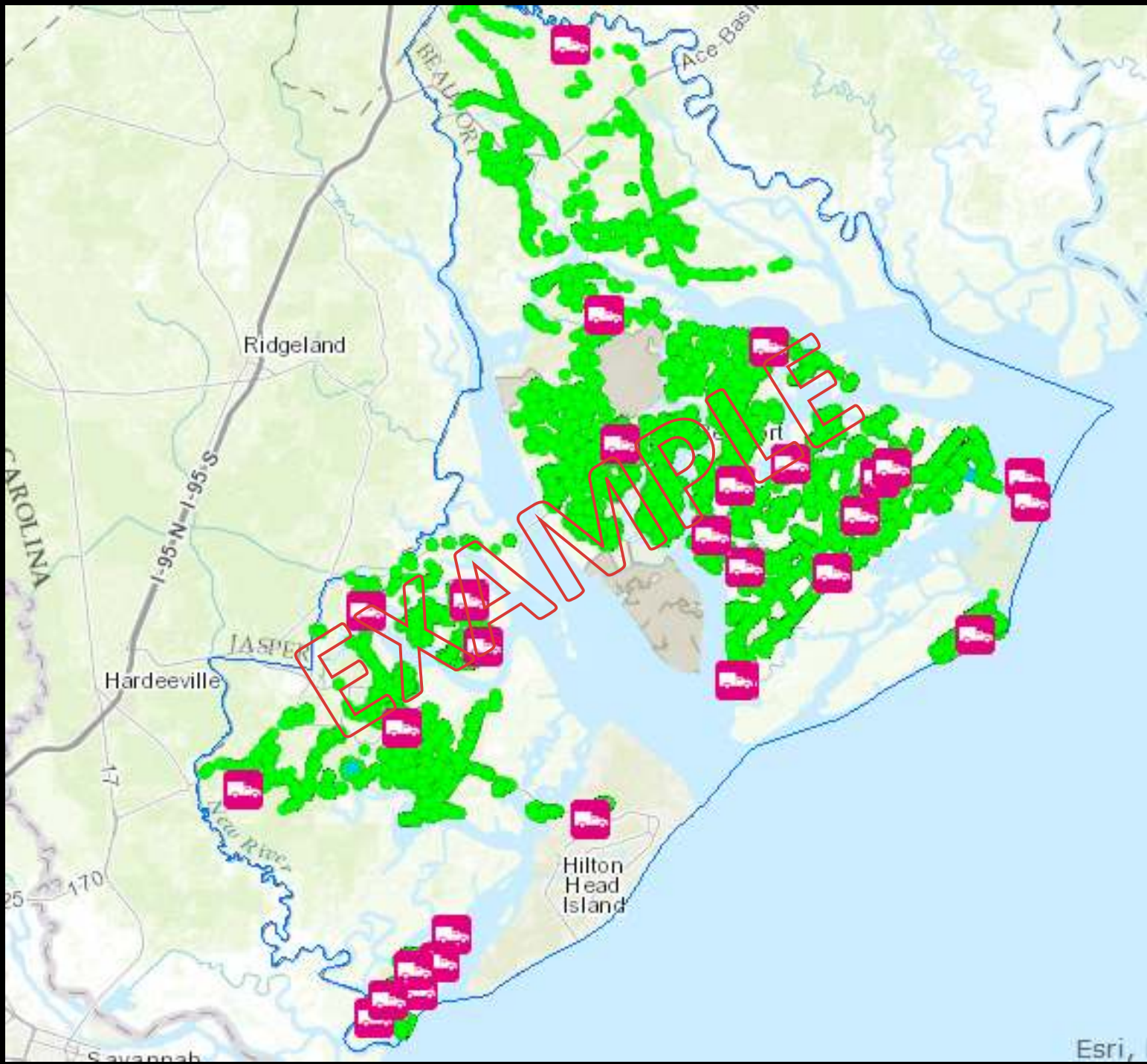
- Yet to be submitted to FEMA:
 - None



PPDR status 2/10/17

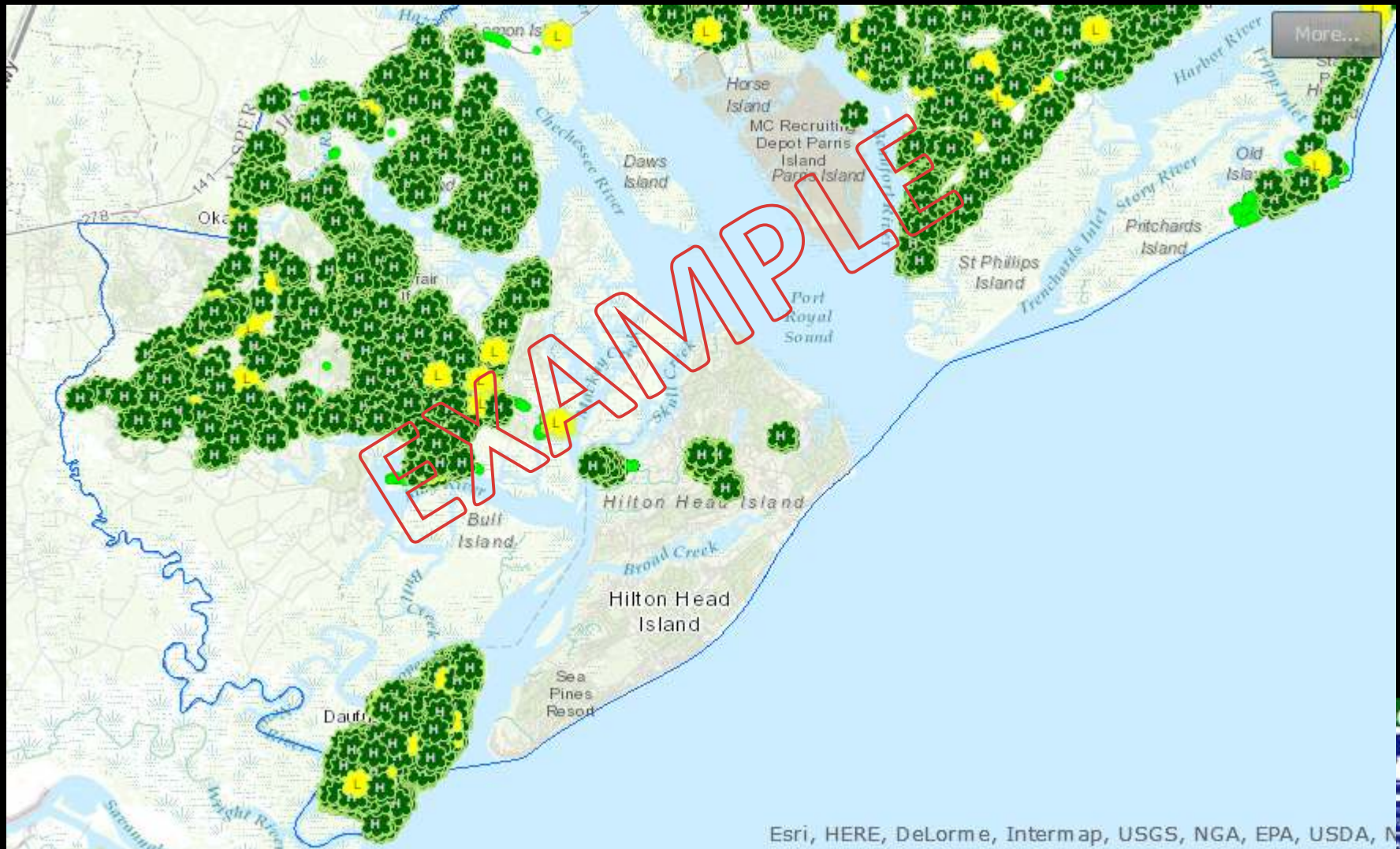
- January 23, 2017, CERES switches to a “punch list” system for collecting in these communities
- The County is divided into 74 similarly sized zones:
 - 33 zones completed
 - 35 zones have punch lists to be completed
 - 6 zones are still active with 2nd/3rd passes





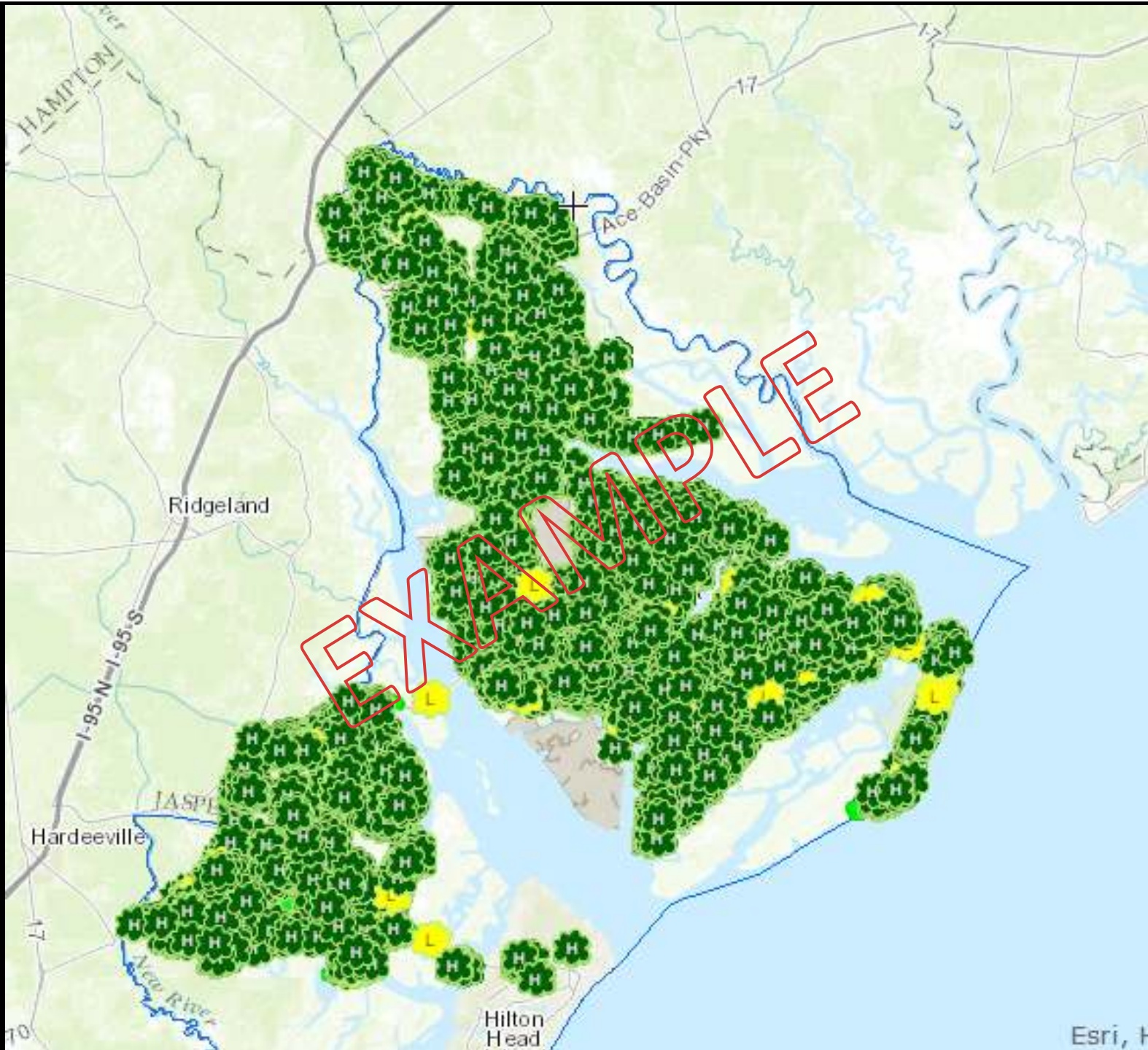
Esri

“Hangers”, “Leaners”, & Stumps



Esri, HERE, DeLorme, Intermap, USGS, NGA, EPA, USDA, N





Esri, I

PPDR non-eligible debris piles

Below is the list with estimated quantities reviewed by CERES

- Fripp Island - approximately 4000 yards of debris
- Dataw Island - approximately 10,000 yards of mulch
- Moss Creek - approximately 8,500 yards of mulch, and 5,750 yards of stumps and very large logs
- Rose Hill - approximately 750 yards of stumps and logs that previous contractor could not grind and approximately 500 yards of brush



Marine Debris

- Boats, Docks, other debris obstructing the navigable waters
- The County questioned if this is the responsibility of the County, SC-DNR, SC-DHEC/OCRM, SC-EMD, or USACE
 - Both SC-EMD and FEMA are working with the County for answers
 - Both DNR and DHEC have sent letters to SC-EMD stating the responsibility is not theirs
 - Jan. 31, 2017 - County received an opinion from the Attorney General's office stating the County has a legal responsibility to remove debris between Low and High tide, the Marsh
 - Additional clarification on the navigable waterways is still needed
 - The County is getting guidance on how to request approval from FEMA to begin work (still pending as of 2/17/17)

Marine Debris action to date

- SC-DNR and US Coast Guard did hazard removal in the navigable channels in the first days after the storm
- Efforts are ongoing by DNR to identify and inventory the vessels and debris
- County advertised for bids to be due 2/15/17. Activating the mutual aid agreement with ToHHI is another option.
 - SC-EMD and FEMA have stated we cannot change order the task to CERES.
 - Cost to remove is unknown at this time



Marine Debris Proposals

- 4 Statements of Qualifications and unit price proposals were received 2/15/17:
 - Arbor Tree & Land, Inc.
 - AshBritt Environmental
 - Crowder Gulf
 - DRC Emergency Services
- Selection committee meets 2/23/17
 - ToHHI representative will be a part of the selection



MS4 Infrastructure Debris

- Fallen trees, woody debris washed into and blocking ditches and pipes within County maintained easements
- Identification and Inventory is complete
 - NRCS staff on site today and tomorrow for assessment
 - Cost estimate \$524,036
- Pursuing USDA funding prior to submittal to FEMA as part of Public Assistance. Application was submitted on January 23, 2017
 - Allows 100% reimbursement for monitoring up to 7.5% of debris cost
- Follows same time frame as other debris
 - If awarded USDA funding, we have 220 days from the date of the agreement

MS4 Infrastructure Debris

DISTRICT	Lady's Island	Port Royal Island (North)	Port Royal Island (South)	Sheldon	St. Helena	Bluffton	
Number of Downed Trees	30	100	57	40	107	15	Total = 249 Trees Down
Workshelf with Downed Trees	12,735ft	51,943ft	18,059ft	67,372ft	42,487ft	2,312ft	Total = 36.92 Miles

- In-house crews have performed limited work in clearing; likely will assist CERES in certain areas
- CERES to take over and complete
- Grant pending approval/denial by USDA
- Additional properties may be added



Lady's Island Workshelves with Downed Trees Census Information



- Affected Parcels
- Blocked Workshelf (12,735ft)
- Downed Tree (30)
- 2010 Census Tracts**
- 901
- 902
- Major_Roads

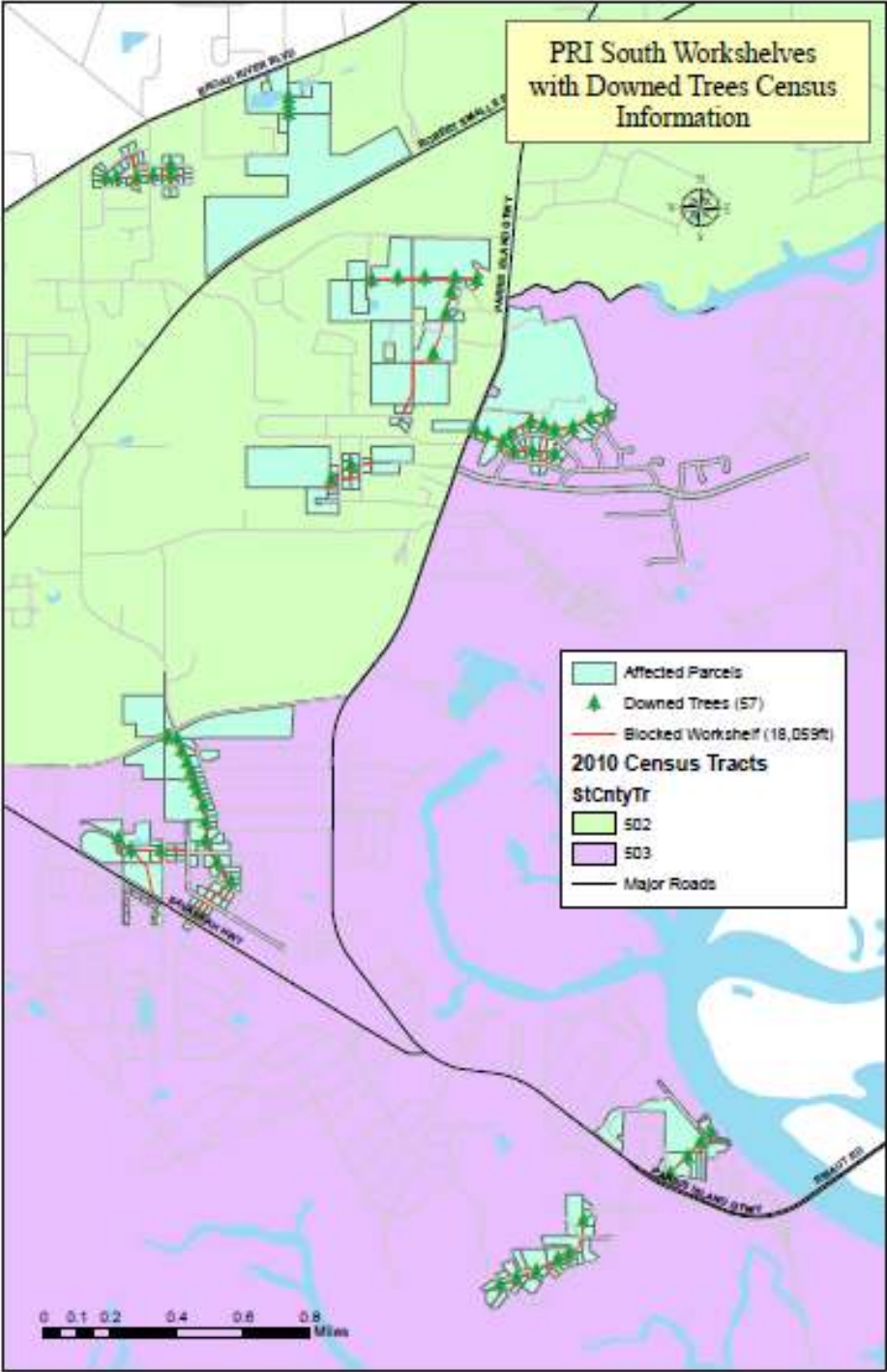
0 0.1750 0.35 0.7 1.05 1.4 Miles



PRI North Island Workshelves
with Downed Trees Census
Information



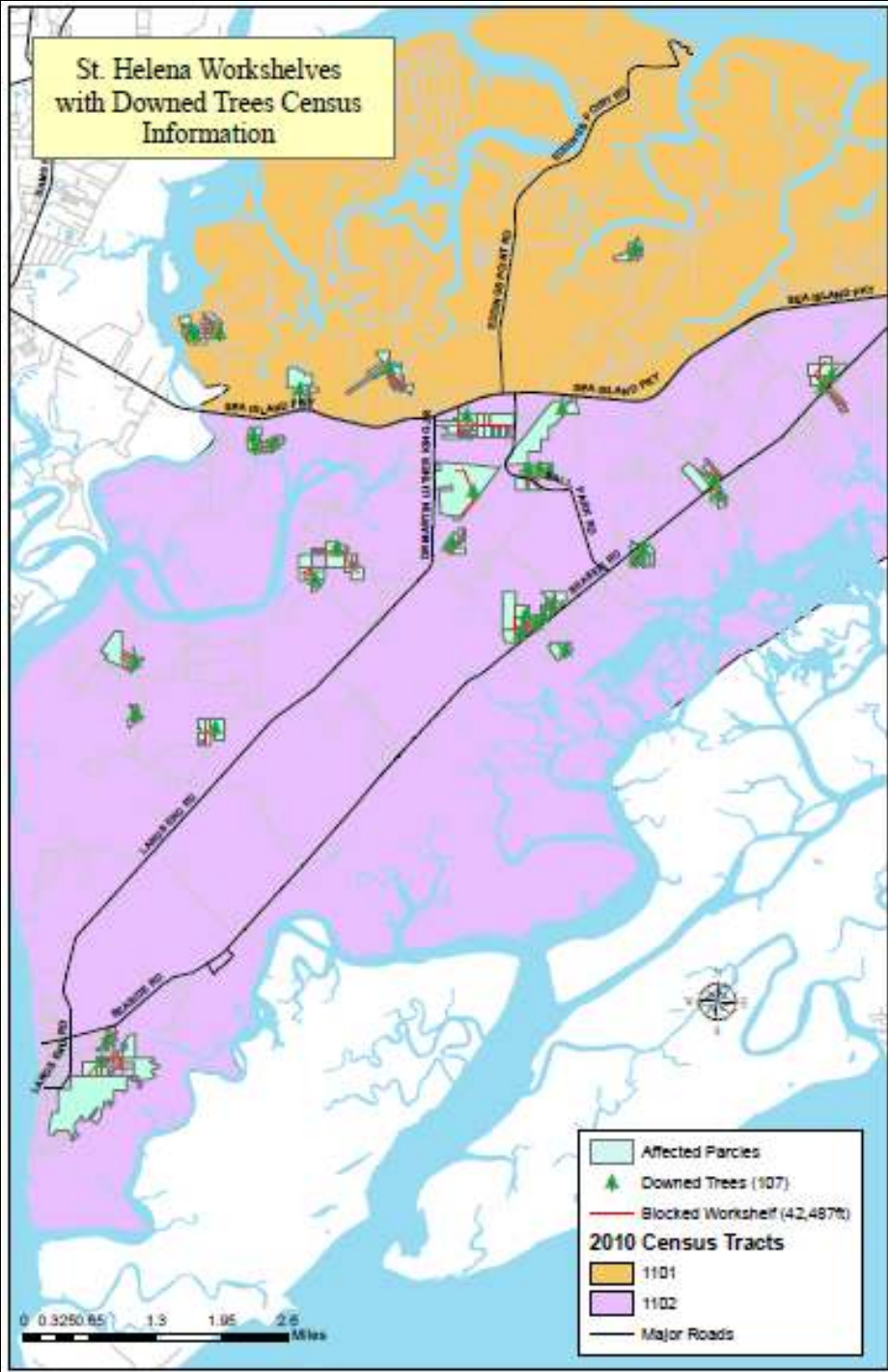
PRI South Workshelves
with Downed Trees Census
Information



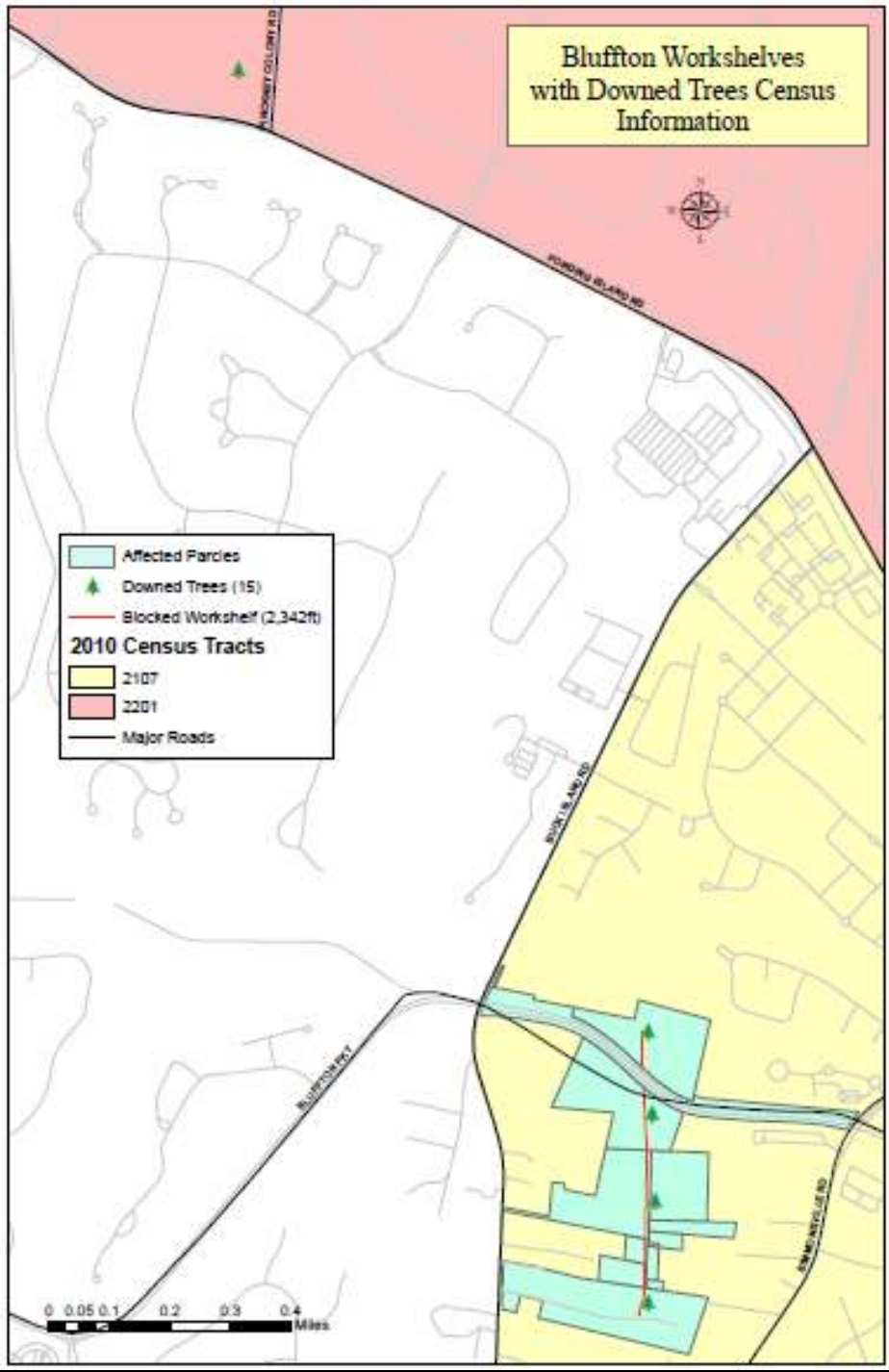
Sheldon Workshelves with
Downed Trees Census
Information



St. Helena Workshelves
with Downed Trees Census
Information



Bluffton Workshelves with Downed Trees Census Information



FEMA reimbursement Program

- The County is participating in a newer pilot debris program by FEMA
- Increases percentage of reimbursement during the first 90 days (85% first 30 days, 80% next 60 days, then 75% up to 180 days)
- Since DHEC and FEMA approved our debris plan in advance of the event, it increases reimbursement by 2%



Damage Assessment

- As of November 10, 2016 w/ Feb. 13, 2017 update:
- Countywide assessment is complete
- 1,055 parcels with damage (excl. HHI)
 - 71 with damaged structures >50% (excl. HHI)
- Estimated cost \$34,108,749
 - Does not include ToHHI's 19,688 parcels inspected. These numbers will not be available until next year when annual permitting reports are available to value cost of all permitted repairs
- County Building Inspection has issued 356 emergency related permits (414 building, 52 electrical)



Town of Hilton Head Island Damage

- As of Feb. 8, 2017:
- Assessment is complete
- 2,858 parcels with damage
 - 30 with damaged structures >50%
- Estimated cost \$74,786,792
- Town Building Inspection has issued 832 emergency related permits to date



Damage Assessment - Beaufort County

(Final Estimates Through 11/10/2016)

Location	All Parcels Damaged	Structures w/ Major Damage (>50%)	Damage (\$\$)
Unincorporated Burton/Beaufort	132	11	\$ 3,399,522
Bluffton/Okatie (Town & Unincorporated)	219	9	\$ 6,867,950
Town Of Port Royal	68	4	\$ 1,976,771
St. Helena	193	15	\$ 4,382,225
Sheldon	20	0	\$ 711,330
Lady's Island	124	11	\$ 7,174,925
Fripp Island	49	8	\$ 1,728,400
Daufuskie	16	5	\$ 1,642,500
City Of Beaufort	234	8	\$ 6,225,126
Hilton Head (Residential)	2792	28	\$ 69,113,792
<u>Hilton Head (Initial Commercial/Businesses)</u>	66	2	<u>\$ 5,673,000</u>
TOTAL	3913	101	\$ 108,895,541

NOTE 1: Damage Assessment is complete in all parts of the County



County Facilities (1/20/17)

- Facilities Management reported damage to 178 separate facilities / structures / grounds
- Much of the work was done by staff
 - Cost summary is pending
- Staff working with Insurance Reserve Fund prior to submittal to FEMA for Public Assistance
- Debris on sites being cleared by Public Works, Grounds, and/or the County's contractor
 - Cost included in Debris Removal costs



Beaufort County Facility Management

Facility Inventory
Updated 1/20/2017

#	Facility	Location	Description	Damage to Building	Damage to Grounds
1	18 John Galt Road	18 John Galt Road	offices-Clemson Extension		
2	A. Home Building	104 Ribaut Road, Beaufort	Single story building		
3	A. Home Nature Park	2540 Azalea Drive, Beaufort	Passive Park		Debris needs to be removed and trees down.
4	Administration Building	100 Ribaut Road, Beaufort	Multi-story bldg	Wet carpet & ceiling tiles in Registrar of Deeds, Assessor's Office, Employee Services and Building Codes.	Stumps needs to be removed
5	Agnes Major Community Center	21 Agnes Major Road,	Single story bldg., ball fields		
6	Aljey Boat Landing	205 Aljey Road	Boat Landing/boat system		
7	Altamaha	141 Ballega Road	Passive Park		Trees down at the bank of the Park.
8	Animal Shelter	25 Shelter Church Road, Beaufort	Single story building	Leak near HVAC vent	
9	Animal Shelter Cat Building	25 Shelter Church Road, Beaufort	Single story building		
10	Animal Shelter Clinic	25 Shelter Church Road, Beaufort	Single story building		
11	Animal Shelter Dog Building	25 Shelter Church Road, Beaufort	Single story building		
12	Baker/Tire Storage Building	108 Shankin Road			
13	Barker Field	70 Baygall Road, JHI	Ball Fields, concession stands, restrooms	Restroom ceiling/water damage Fence Damage	4 stumps needs to be removed
14	Barrel Landing	Near McGarvey's Corner	Rural and Critical Lands		
15	Beal Green Complex	1500 Rodgers Street	Ball Fields, restrooms, concession stand	Shingles/tar paper missing from dugouts	
16	Battery Creek High School Pool	One Blue Dolphin Drive, Beaufort	pool		
17	Beaufort County Gov't Center South	530 William Hilton Parkway			
18	Beaufort High School Pool	64 Sea Island Parkway, Beaufort	pool		
19	Beaufort Library	311 Scott Street, Beaufort	Multi-story bldg		
20	Beaufort Tennis Courts	1105 Bladen Street	Tennis Courts, restrooms	tennis nets are down	
21	SVI #5-Traffic Eng./Rec. Mgmt.	113 Industrial Village Road, Beaufort	2 story bldg./slab on grade		
22	SVI 8-Engineering	104 Beaufort Industrial Road	single story bldg., slab on grade		
23	SVI 8-Finance, Purchasing, Risk Mgmt.	106 Beaufort Industrial Road	single story bldg., slab on grade		
24	SVI 1-Staff atty., Clemson Extension	102 Burton Hill Road, Beaufort	single story bldg., slab on grade		
25	SVI 4-Voters Registration	15 John Galt Road, Beaufort	Single story building		

Beaufort County Facility Management

Facility Inventory
Updated 1/20/2017

#	Facility	Location	Description	Damage to Building	Damage to Grounds
26	Bluffton EMS	2 Bridge Street, Bluffton			
27	Bluffton Fuel Site	25 Benton Field Road, Bluffton	Abundant's Office, canopy		
28	Bluffton Gym	61 Ulmer Road, Bluffton		Tree on edge of roof, tree removed	2 shutters needs to be removed
29	Bluffton Library	120 Palmetto Way, Bluffton		2 metal sun shutters torn off by wind, Sun shade on left side fallen, ceiling tiles wet, tree on fence	
30	Bluffton Middle	61 Ulmer Road, Bluffton		Fence Damage	
31	Bluffton Pool	55 Pritchard Farm Road, Bluffton			
32	Bluffton Public Works	9 Benton Field Road, Bluffton		Tree on fence - removed, fence damaged	
33	Bluffton Pump House	Ulmer Road			
34	Bluffton Storage Building	Ulmer Road			
35	Bob Jones Field	2712 Jones Avenue	Ball Fields, concession stands, restrooms		
36	Booker T. Washington Center	132 Booker T. Washington Circle	Single story bldg., basketball court, playground		
37	Brickyard Creek Landing	275 Brickyard Pt. Road	Boat Landing		
38	Bristol Skate Park	4 Helmway, HRI	Skate Park		Remove Skate Park trees from slumps
39	Broad River Boat Landing	1050 Robert Smalls Parkway	Boat Landing		
40	Broad River Pier	1000 Robert Smalls Parkway			
41	Broad River Restrooms	1050 Robert Smalls Parkway	Restrooms at pier		
42	BRCC-Beaufort Recovery Operation Center	Hampton, SC			
43	Broomfield Community Center	200 Brickyard Point Road, Beaufort	Single story bldg., ball fields, dugout	Front door broken/window pane broken	
44	Bruce Edgerly Field	719 18th Street, Port Royal	Ball Fields, restrooms		Slump and utility pole needs removing
45	Buckingham Boat Landing	55 Fording Island Road East	Boat Landing		Trees down
46	Buckwelder Park	905 Buckwelder Parkway	Restroom, concessions		Buckwelder Soccer Field lights
47	Buckwelder Parkway	Buckwelder Parkway	15 miles of parkway		Trees down in the median
48	Buckwelder Rec Center	905 Buckwelder Parkway			
49	Buddy Lubkin/Zoo Von Harten Landing	40 Station Creek Road	Boat Landing/float system/house		
50	Burton Wells Complex	1 Middleton Recreation Drive	Ball Fields, concession, restrooms, building		

Beaufort County Facility Management

Facility Inventory
Updated 1/20/2017

#	Facility	Location	Description	Damage to Building	Damage to Grounds
51	Burton Wells Lake	50 Burton Wells Road	kayak pond	Palm tree leaning against restroom roof Fence damage	Fire hose needs to be removed and stored
52	Burton Wells Park	55 Burton Wells Road	Ball Fields, concession stands, restrooms		
53	Burton Wells Park Restroom, press box, concessions	1 Middleton Recreation Drive			
54	Butchers Island Landing	10 Butch's Road	Boat Landing		Rubber Island debris
56	C.C. Haigh, Jr. Boat Landing	1640 Fording Island Road Ext.	Boat Landing/pier/float system		
56	Camp St. Mary's	119 Camp St. Mary's Road	4 structures		Fire hose down, stumps and debris
57	Chaplin Park	11 Cashnet, Hilton Head Island, SC	4 buildings and ball field		Debris
58	Coffin Point Drop Off Center	10 Caw Caw Road	Single story building		
59	Coosaw Community Center	140 Coosaw River Drive	Single story bldg., playground		
60	Coroners Office	1804 Old Shell Road, Port Royal	single story	Tree limb damaged a down spout on building	
61	Courthouse	102 Ribaut Road, Beaufort	Multi-story bldg.		
62	Courson-Yale Park	10 Springfield Rd, Beaufort, SC 29907		Fence damage	Tree and Stump needs to be removed
63	Cross Island Boat Landing	58 Helmsman Way	Boat Landing/pier/ float system		Debris needs to be removed
64	Crookings Park	4 Haig Point Court, HHI	Ball Fields, concession restrooms	Fence Damage	Fire hoses, debris and stumps needs to be removed
65	Crystal Lake	124 Lady's Island Drive, LI 29907	Passive Park, building		
66	Cuffy Drop Off Center	152 Cuffy Road	Single story building		
67	Dale Community Center	15 Community Center Road	Single story bldg., ball fields, restrooms, ball court		
68	Daufuskie Island Boat Landing	13 Haig Point	Boat Landing/float system		
69	Daufuskie Island Restrooms	New River			
70	Daufuskie Island Store	New River			
71	Del Webb Fire Station	25 William Pope Drive, Hilton Head			
72	Detention Center	106 Ribaut Road, Beaufort	Multi-story bldg.		
73	DNA Lab Sheriff's Office	111 Industrial Village Road	Office		
74	OSN Broad River Residence	429 Broad River Drive, Beaufort	single story residence		
75	OSN Chloe	3 Chloe's Way	single story residence		

Beaufort County Facility Management

Facility Inventory
Updated 1/20/2017

#	Facility	Location	Description	Damage to Building	Damage to Grounds
76	OSN Clearwater Admin Building	100 Clear Water Way			
77	OSN Clearwater Main Building	100 Clear Water Way	OSN Office		
78	OSN Cottage Walk	18 Cottage Walk	OSN Residential house		
79	OSN Fraser Drive	304 Fraser Drive		Tree is leaning on fence, damaged	
80	OSN Lakes Crossings	79 Lakes Crossing Blvd., Bluffton			
81	OSN Little Capers	260 Little Caper's Road	single story residence		
82	OSN Office	1804 Old Shell Road, Port Royal	Single Story Building		
83	OSN Palmetto Ridge (property only)	2012 Palmetto Ridge Street, Beaufort	Property only		
84	OSN Peyton	9 Peyton's Way	single story residence	Tree on roof, removed, roof damage	Stumps need to be removed
85	OSN Pinecrest	210 Pinecrest Circle, Bluffton, SC			
86	OSN pottery Building	100 Clear Water Way			
87	Eddings Point Boat Landing	168 Eddings Pt. Road	Boat Landing		
88	Edge Glenn Boat Landing	205 Okeah Highway	Boat Landing/float system		
89	Facilities Maintenance Office	142 Shankin Road, Beaufort	Single Story		Fac maintenance office tree leaning
90	Federal Courthouse	1501 Bay Street, Beaufort	Multi-story bldg. Leased to St. Elena		
91	Fort Fremont	St. Helena Island			Debris needs to be removed, stumps
92	Fuel Manager's Office	Shankin Road			
93	Fuel Site	Shankin Road	4 pumps/canopy		
94	Gates Drop Office Center	130 Castle Rock Road, Beaufort	Single story building		
95	Grays Hill Landing	208 Carleton Road	Boat Landing/float system		
96	Grounds Maintenance Office	136 Shankin Road, Beaufort	Single Story	Building flooded, water damage, tile damage	
97	H.E. Trask, Sr. Boat Landing	525 Sawmill Creek Road	Boat Landing/float system		
98	Health Center	600 Wilmington Street, Beaufort			
99	Health Center/DHEC	1407 King Street, Beaufort			
100	HI Island Library	11 Beach City Road, Hilton Head			Stumps needs to be removed

Beaufort County Facility Management

Facility Inventory
Updated 1/20/2017

#	Facility	Location	Description	Damage to Building	Damage to Grounds
101	HH Airport Hangars	120 Beach City Road, HH			
102	HH Airport Terminal	120 Beach City Road, HH		Roof soffit section missing	
103	HH Airport Tower	120 Beach City Road, HH			
104	HH Island Airport CTR	120 Beach City Road, HH			
105	HH Island Government Center	500 William Hilton Parkway			Debris from entrance needs to be removed
106	Hilton Head Park	150 William Hilton Parkway, HH	2 tennis courts, basketball court	Fence damage	Debris from basketball court area needs to be removed
107	Human Services Building	1905 Duke Street, Beaufort	Multi-story bldg		
108	Lady's Island Airport Hangars	41 Airport Circle		One foot damage from water intrusion/light vault water damage	
109	Lady's Island Airport Terminal	41 Airport Circle		ceiling/water dmage, extensive damage to building, runway lighting damage	
110	Law Enforcement Center/EOC	2001 Duke Street, Beaufort	Multi-story bldg	Light pole damaged, back door closer damaged, fence damage	
111	Lemon Island-Widgeon Point	Southern Beaufort County	Rural and Critical Lands		
112	LeRoy Brown Center	41 Ball Park Road		Fence Damage	
113	Lind Brown Community Center	1001 Hamar Street, Beaufort	Gym, pool	Gym has water on floor under alc vent	
114	Lobeco Library	1862 Trask Parkway, Lobeco			Debris needs to be removed
115	Lobeco Drop Off Center	8 Keans Neck Road	Single story building		
116	M.C. Riley Park	105 Goethe Rd., Bluffton	Concession Stand, restroom, ball fields	Missing shingles	Debris and stumps
117	Megistrate/Sheriff Lobeco	1860 Trask Parkway			
118	Marine Rescue Squadron/Conservation	617 Paris Ave., Port Royal, SC		Missing shingles, ceiling leaks, soffit damage	
119	Marshland Landing	97 Marshland Road	Boat Landing/boat system		
120	McGarvey's Corner	2035 Oxide Highway	Property only		Trees down
121	Mets Field	1012 National Street	Ball Fields		
122	Mosquito Control	84 Shankin Road, Beaufort	Single story	Roof leaks	
123	Mosquito Control-Hanger	39 Airport Circle		Cantilever gate has salt water damage	
124	Mosquito Control Maint Shop	84 Shankin Road, Beaufort		Roof leaks	
125	Mosquito Control Maint Shop	25 Airport Circle		water damage, extensive damage, memo office one foot of water in building	

Beaufort County Facility Management
 Facility Inventory
 Updated 1/20/2017

#	Facility	Location	Description	Damage to Building	Damage to Grounds
126	Mosquito Control-Chemical Storage	64 Shankin Road			
127	Motorola Maintenance Shop	144 Shankin Road, Beaufort	Single story		
128	Myrtle Park	4819 Bluffton Parkway, Bluffton	Multi-story bldg.	Ceiling tile damage and exterior damage. Metal roof damage, ceiling tile water intrusion and wet carpet.	two stumps needs removing
129	Old House Creek Pier	50 Sterling Point Drive	Pier		Old House Creek trees down and debris
130	Oscar Frazier Park	77 Shultz Road, Bluffton, SC	Ball Fields, concession stand, restrooms		Trees, stumps and debris
131	Paige Point Boat Landing	99 Paige Point Landing Road	Boat Landing		
132	PALS Office	1514 Richmond Avenue, Port Royal	Single story bldg, lab on grade	Tree on fence, fence is crushed.	
133	Parris Island Boat Landing	50 Matra Blvd.	Boat Landing/float system		
134	Pistol Range	130 Shankin Road, Beaufort			
135	Port Royal	50 Sands Beach Road	Boat Landing/float system		
136	Pritchardville Drop Off Center	54 Oblet Road	Single story building		
137	Public Works Building and Garage	120 Shankin Road, Beaufort	Single story	Building flooded, ceiling tile damage, floor tile damage, 7 offices	
138	Public Works Open Storage Building	120 Shankin Road, Beaufort		Skylight on roof of building is missing, roof damage	
139	Records Management	2727 Depot Road			
140	Russ Point Boat Landing	15 Russ Pt. Landing Road	Boat Landing/float system		
141	Sama Point Boat Landing	1009 Sama Pt. Landing Boat	Boat Landing/float system		
142	Scott Community Center	242 Scott Hill Road, St. Helena	Single story bldg, court, playground, ballfields	Fence down, Tree on power box	Debris needs removing
143	Seaside Community Center	122 Seaside Road, St. Helena	Single story bldg, basketball court, playground		tree base and stumps needs removing
144	Senior Citizen's Center	1408 Paris Avenue, Port Royal		Debris on roof	
145	Senior Citizen's Center-Burton Wells	2 Middleton Recreation Drive	Single story building		
146	Shankin Drop Off Center	60 Shankin Road Beaufort			
147	Shankin Drop Off Center (old)	132 Shankin Road, Beaufort	Single story building (Closed)		
148	Sheldon Drop Off Center	208 Paige Point Road	Single story building		
149	Shell Point 500 Mgr Building/tower	59 Cleveland Drive, Beaufort	Re-hab 2011		
150	Shell Point Elementary Field	Savannah Hwy (SC2), Burton	Ball Fields, School lease		



Beaufort County Facility Management

Facility Inventory

Updated 1/20/2017

#	Facility	Location	Description	Damage to Building	Damage to Grounds
151	Shell Point Park	301 Broad River Drive	2 tennis courts, ball fields, restrooms		Pine tree leaning in entrance to park
152	Shell Point Property	696 Paris Island Gateway	Parcel of property		
153	Shell Point Repeater/Power Building	19 Cedar Wood Street, Beaufort			
154	Sheriff's Annex	2727 Depot Road			
155	Sheriff's Camp	113 Choisan Creek Bluff, Beaufort	One single story building		Debris outside of fence needs removing, stumps
156	Sheriff's Gym	2727 Depot Road			
157	Sheriff's Impound lot	134 Shanklin Road			
158	Sheriff's Office Annex	1025 Duke Street, Beaufort	Single story building-leased building	Trees down, building damaged, fence damage.	
159	Sheriff's Office Helo Hanger	237 Sea Island Parkway, U		Missing metal wall panels damaged	
160	Sheriff's Office Spec Ops	1021 Oatlie Highway	office		
161	Sheriff's Storage	2727 Depot Road			
162	Simmonsville Drop Off Center	104 Simmonsville Road			
163	Southside Tennis Courts	1407 Battery Creek Road	Tennis Courts, restrooms	Back board on tennis court leaning, fence damage, light poles are leaning	Debris needs removal, trees and stumps
164	Spanish Moss Trail	Between Roseade/Hwy 200	1.5 miles	Numerous washouts	
165	St. Helena Drop Off Center	633 Sea Island Pkwy, Beaufort	Single story building		Debris at entrance needs removing
166	St. Helena Library	6355 Jonathan Francis Gr. Road, St. Helena		Door to dumpster inclosure is damaged	Debris needs removing
167	Station Creek House	36 Station Creek Drive		Roof damage, shingles missing	Station Creek debris
168	Steel Bridge Landing	933 Charleston Hwy	Boat Landing/boat system		
169	Storm Water Building	120 Shanklin Road, Beaufort	Single Story Building		
170	Storm Water Building #2	106 Shanklin Road	Offices (old Coroner's Office)		
171	Super Hill Landing	40 Super Hill Landing Road	Boat Landing		Debris needs removing
172	United Way Building				
173	Wallace Landing	245 Sam Doyle Drive	Boat Landing		
174	Warehouse	2727 Depot Road	Old Record's Management Building/Storage		
175	Waterside Storage	1675 Sea Island Pkwy., St. Helena	Property only		

Beaufort County Facility Management

Facility Inventory
Updated 1/20/2017

#	Facility	Location	Description	Damage to Building	Damage to Grounds
176	Wesley Felix Park - St. Helena Park	185 Ball Park Road, St. Helena Is.	Ball fields, restrooms, concession stand	Fence damage	Field 1 debris needs removal
177	White Hall Landing	33 Sea Island Parkway	Boat Landing/float system		
178	Wimbee Landing	550 Wimbee Landing Road	Boat Landing/pier		



Public Assistance (PA) Projects

- The following list of projects has been submitted to FEMA for consideration under PA during our “kick off” meeting 11/10/16:
- Debris Removal - \$26,754,878
 - Paid out \$3,985,537
 - Pending payment \$8,173,752
- Emergency Response - \$2.5 million
- Facility damage
 - Boat ramp damage
 - Recreational Facilities
- Road damage



Significant PA projects

- Lady's Island Airport Terminal, Hangers, and Airfield - \$ 404,391 (does not include Mosq. Control hanger and contents, and additional Terminal repairs, & additional Sheriff's Hanger repairs)
- Flyover approach embankment erosion & Spanish Moss Trail causeway erosion - \$597,905
- Boat Ramp Repair - \$184,996



Significant PA projects

- Central Drive causeway - \$1.33 million
 - Central Drive Repairs awarded on Nov. 22, 2016 to Andrews Engineering, J.H. Heirs, and O'Quinn Marine team. Completion by May 21, 2017

Projected: \$35 million

cost share \$10-15 million

Total to date: \$31,792,170

25% = \$7.9 million

Paid to date = \$6,833,369

Encumbered: \$30.7 million



County Operations

- The following departments and agencies with recovery functions have reported “normal operations”
- Animal Services
- Mortuary Services
- Schools
- EMS
- PALS (although they continue to assist HSA)
- Utilities
- Planning and Zoning



County Operations

- The following departments and agencies with recovery functions are still managing Hurricane Recovery:
- Public Works
- Stormwater
- Facilities Management
- Engineering
- Building Inspection
- Assessor's Office
- Legal / Finance / Admin.
- Communications



Public Information

- Website has the most current staff reports and data

www.beaufortcountydisasterrecovery.net

- Staff continue to update WebEOC, an internal program, on status, activity, needs, and damages. This will serve as documentation to FEMA for the storm event



Individual Assistance (IA)

- FEMA's status:
 - Disaster Recovery Centers (DRC) now closed
 - Disaster Survivor Assistance (DSA) teams have ended operations
 - Deadline to register for IA has passed
- Citizens with registered cases can get updates on their cases by calling 1-800-621-3362 or go to www.disasterassistance.gov



“Long Term Recovery Team”

- Beaufort County Human Services Alliance (HSA) has partnered with United Way and numerous other NGOs to establish a long term recovery team within the framework of “Volunteers in Action during a Disaster” (VoAD).
- Citizens can call 843-524-HELP or 211 to seek assistance.
- Long term case management is a growing need. HSA is working to define a process to work with outside agencies to hand off cases when needed. SCEMD has hired an outside case management firm to assist if needed.



Human Services Alliance

- HSA, PALS, and United Way worked together to coordinate a donation drive for food, clothes, money, Christmas gifts. We received:
 - 10 bags of clothes
 - 2 bags of new toys
- Donations benefitted Bluffton Self Help and HELP of Beaufort
- Volunteer groups and those offering free or discounted services should call United Way of the Lowcountry to register their resources.



Volunteer groups and agencies with significant contributions

- United Way of the Lowcountry
- Beaufort County CERT
- Samaritan's Purse / Lowcountry Community Church
- Hilton Head Island Rotary Club
- Holy Family Catholic Church
- Praise Assembly
- Others



Human Service Alliance Stats

- Volunteers (Number of People): 914
- Time Dedicated to Hurricane Recovery Efforts (hours served): 12,250
- Case Load: 1,320
- Beaufort County Disaster Relief Fund:
 - Funds to date: \$36,768.25



Summary of HSA needs

United Way of the Lowcountry
 Disaster Recovery – Community Needs
 12/30/2016



<u>Referrals</u>					<u>Number of unique callers</u>	
1225					1011	
Short-term housing	Tree removal from house	Utility	Emergency MRE's	Prescriptions		1 – appliances 1 – Painting 1 – load of fill dirt 9 – Thanksgiving 91 - Christmas 1 – Chemo 1 – House Fire 2 – Car payments 4 – Other County 12 – DRC's 2 – Moving a trailer 1 – set up costs for mobile home
81	60	159	11	9		
Long term housing	Tree leaning	Rental	Hot meals	Transportation		
45	61	114	32	13		
Storage Needs	Debris removal from yard	Clothing	Food Pantries	Gas		
12	96	42	196	10		
Movers	Home repair needs	Diapers/baby needs		Employment		
4	123	8		17		
	Water testing					
	4					
						128



Ongoing Needs

- Home Repair
 - Hilton Head Island, pockets of Bluffton, and isolated cases in Jasper County
 - To volunteer or donate, contact The Deep Well Project at 843-785-2849.
- Financial Need
 - Related to past due utility bills and rent; loss of employment/wages; home repairs; and insurance deductibles
 - To donate, contact United Way of the Lowcountry at 843-982-3040 or Community Foundation of the Lowcountry at (843) 681-9100.

