

Beaufort County
Hurricane Matthew
Recovery Briefing
February 14, 2017
(Day 130)

A Report to Hilton Head Area
Association of Realtors



Outline

- Debris Removal
 - Road (public and private)
 - Marine
 - Stormwater
- Damage Assessment
 - Private Property
 - County Facilities
- Public Assistance funding
- Status of County Operations
- Individual Assistance funding
 - Human Services assistance to the public



Public Road Debris

- As of February 9, 2017:
 - 1,433,471 CY collected from Public Roads (28,739 loads)
 - 66,529 CY estimated remaining *
 - As high as 122 trucks operating; currently 18
 - 62,922 hanging limbs removed
 - 3,180 leaning trees removed
 - 1,079 stumps removed
- 96th day of operation
- Work also includes 27 school campuses and the public roads in 3 municipal areas
- 1st Pass was completed on 12/2/16
- 2nd Pass was considered complete on 12/23/16
- Still on schedule to be complete by end of Feb.

* Based on 1.5 mil. CY to be collected. Does not include stumps, SW and Marine Debris sites



Debris Disposal

- 4 Debris Management Sites
- Ihly Farms Mulch removal
 - 39,959 CY removed
 - 404 loads
- CERES has a contract to use the mulch to construct a firing range in Yemassee. Good example of beneficial re-use of the waste product.



Town of Hilton Head Island Debris

- Separate Contract with Crowder – Gulf
- Estimated total cost for Debris = \$55 mil.
 - 30% Public, 70% Private
 - Expended to date: \$11,264,997 (through 2/8/17)
- Estimated total volume for Debris = 2.5 mil C.Y.
 - Collected to date: 2,054,442 CY (through 2/8/17)
 - Hangers 42,058
 - Leaners 5,301
 - Mulch removed 771,051 CY
 - Sold to paper mill, local farms, Oakwood Landfill, Firewood supply company, Lumber supply company, a hardwood sawmill and to the Port of Savannah for logs to be exported to Ho Chi Minh City, Vietnam



Debris Removal Status Report

Thursday, February 09, 2017

BEAUFORT COUNTY, SC

FEMA-4288-DR | SC - HURRICANE MATTHEW

ROW COLLECTION

Daily Statistics (02/09/2017)

Daily Totals

CuYds Collected Vs. Remaining

Total Cubic Yards

6,329

VEGETATIVE/WOODY

6,329

Total Loads

130

Total Trucks Operating

18

Average CuYds Per Load

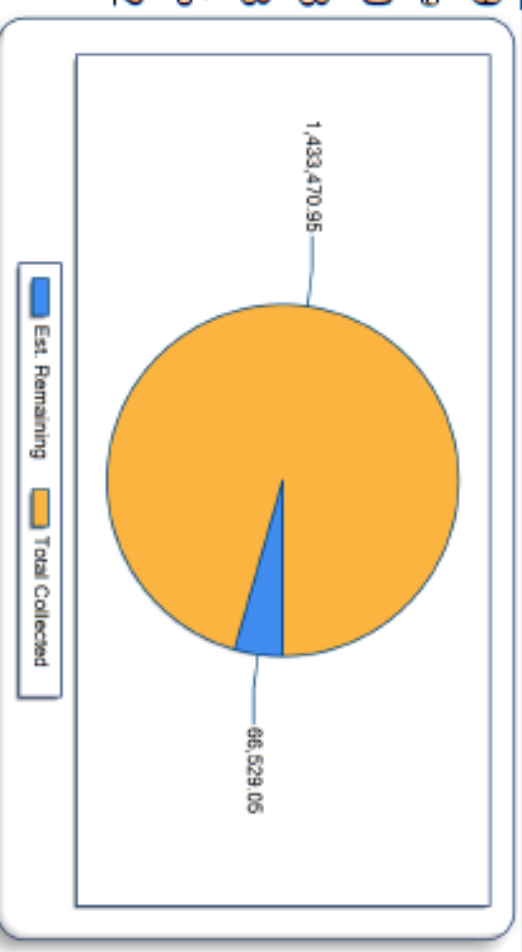
48.68

Average Load Call

76.85%

Disposal Sites in Operation

2



Debris Removal Status Report

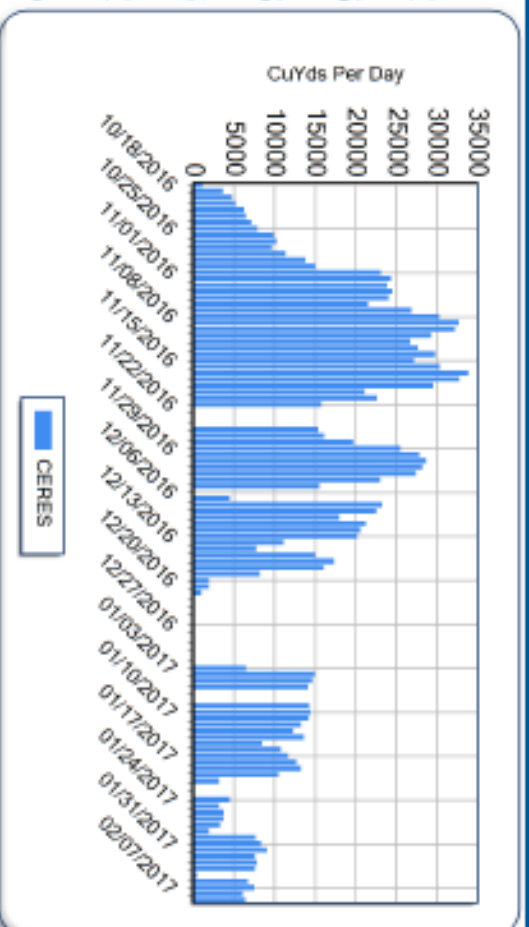
Thursday, February 09, 2017

Project Totals

Job to Date Statistics

Total CuYds Per Day

Total Cubic Yards	1,433,471
Total Loads	29,572
Days Operational	96
Average Cubic Yards Per Load	48
Maximum Day Cubic Yards	33,776
Average Day Cubic Yards	14,932
Average Load Call	78.73%

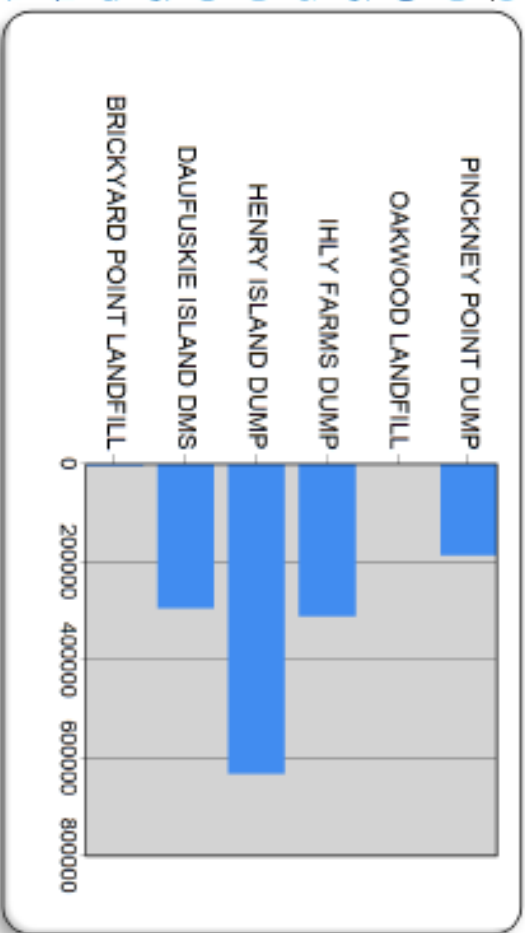


Debris Removal Status Report

Thursday, February 09, 2017

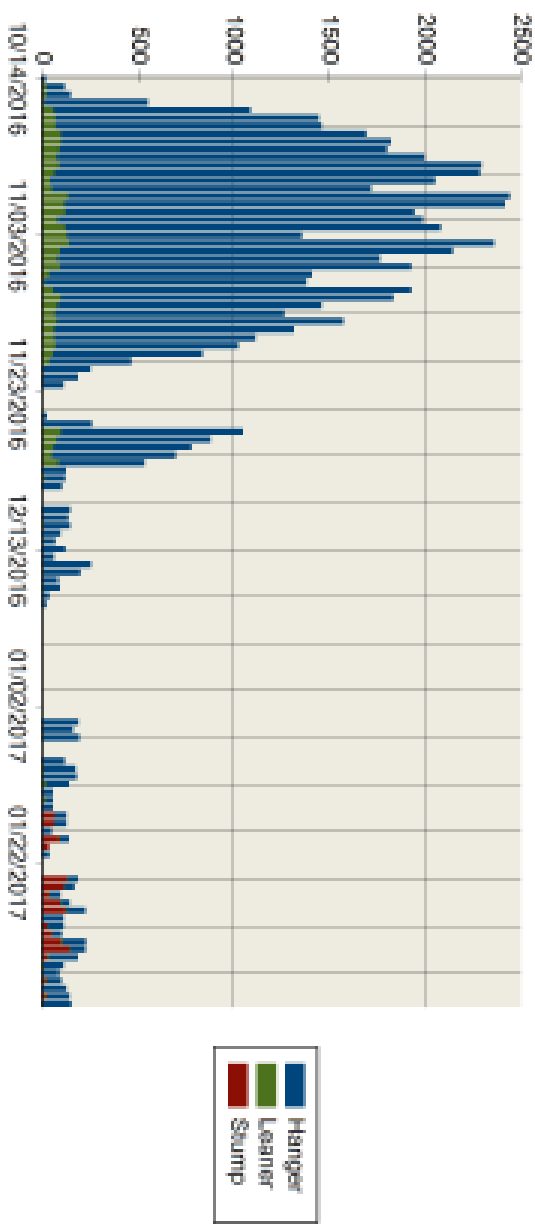
Debris Management Sites

Site Name	Today	JTD
BRICKYARD POINT LANDFILL	0.0	4,902.9
CONSTRUCTION&DEMOLITION	0.0	4,902.9
DAUFUSKIE ISLAND DMS	6,149.6	295,630.5
VEGETATIVE/WOODY	6,149.6	295,630.5
HENRY ISLAND DUMP	179.3	633,181.9
VEGETATIVE/WOODY	179.3	633,181.9
IHL Y FARMS DUMP	0.0	311,497.6
VEGETATIVE/WOODY	0.0	311,497.6
OAKWOOD LANDFILL	0.0	844.4
CONSTRUCTION&DEMOLITION	0.0	844.4
PINCKNEY POINT DUMP	0.0	187,413.9
VEGETATIVE/WOODY	0.0	187,413.9



BEAUFORT COUNTY, SC
FEWA-4288-DR | SC - HURRICANE MATTHEW
ROW COLLECTION

Hazard Removals By Day



Today's Hazard Removals

Cumulative Hazard Removal

Total Crews in the Field

3

Hangers

1A-HANGER REMOVAL PER TREE

Totals

145

Leaners

2B-TREE REMOVAL 13 - 24.99 IN DIAMETER

2C-TREE REMOVAL 25 - 36.99 IN DIAMETER

2D-TREE REMOVAL 37 - 48.99 IN DIAMETER

Totals

1

1

1

Stumps

Totals

1

Progress to Date

	Estimated	Completed	Percent
Hanger	0	62,622	0.0 %
Leaner	0	3,180	0.0 %
Stump	0	1,079	0.0 %
Total	0	67,181	

Productivity Statistics

Hanger Removal Medium	2,313
Hanger Removal Average	849
Hanger Removal Minimum	2
Leaner Removal Medium	136
Leaner Removal Average	37
Leaner Removal Minimum	1
Stump Removal Medium	137
Stump Removal Average	67
Stump Removal Minimum	17

Mulch Haulout report

RecoveryTrac Project Haulout Report

Report Period: 01/25/2017 to 02/09/2017

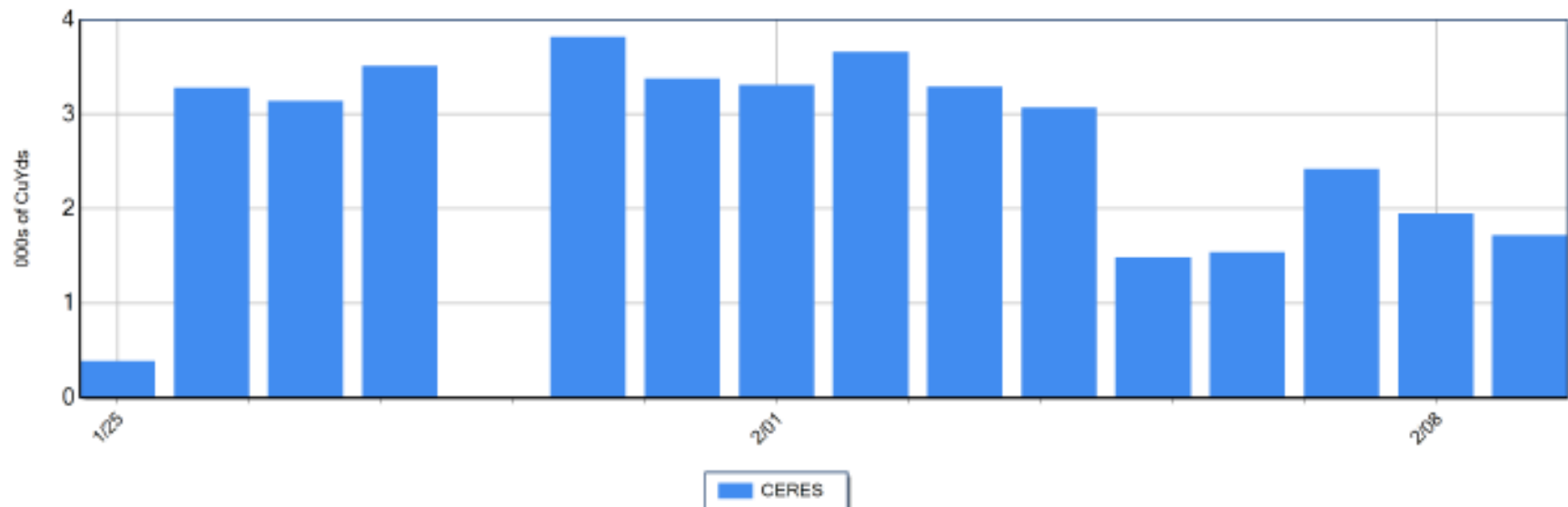
BEAUFORT COUNTY HURRICANE MATTHEW

Current Day (02/09/2017) Statistics

Cumulative - JTD Statistics

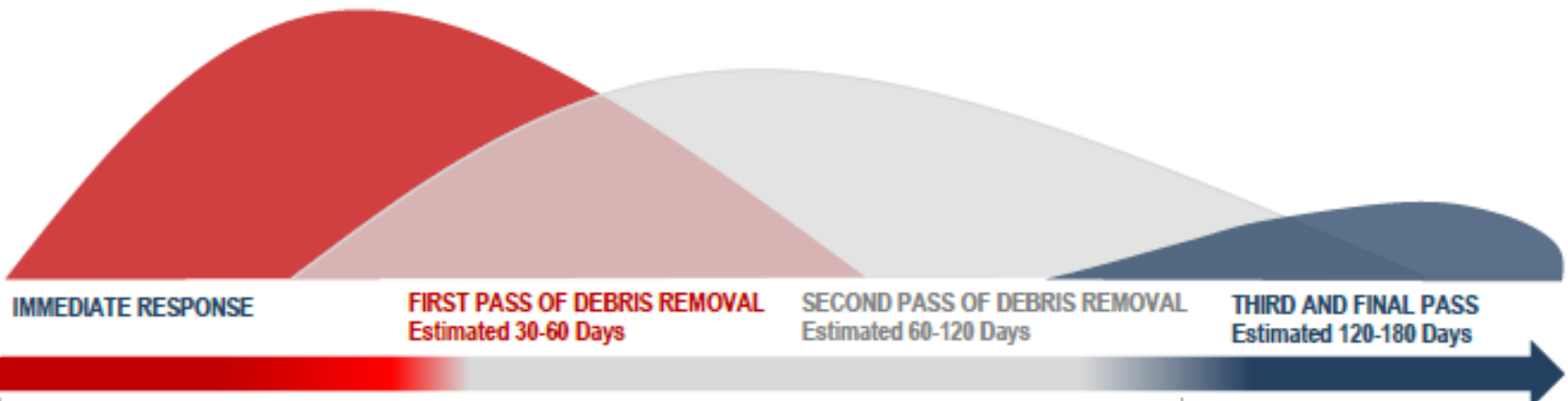
DMS	Loads	Avg Load Call	Total Volume	DMS	Loads	Avg Load Call	Total Volume
IHL Y FARMS DUMP	17	89.1	1,723	IHL Y FARMS DUMP	404	87.2	39,959
Totals:	17		1,723	Totals:	404		39,959

Haulout Debris Removed by Contractor by Day



Schedule

Matthew
Impact
10.8.16



Activities included:

- Emergency Road Clearing (Push)
- Conduct preliminary damage assessments.
- Identify and assess debris management site
- County activated contracts with pre-positioned debris hauling contractor (Ceres Environmental) and debris monitoring contractors (Tetra Tech)
- Request for Public Assistance made to FEMA through South Carolina Emergency Management Department

Activities include:

- Debris Contractor Ceres has initiated debris removal activities
- All debris removal is being monitored and documented in accordance with FEMA regulations
- Dangerous hanging limbs affecting the public Rights-of-Way are being removed
- Hazardous leaning trees affecting the public rights-of-way are being removed
- Beaufort County has requested a waiver from FEMA to allow debris collection from Rights of Way on Private roads

Activities include:

- Hanging limb and leaning tree removal will be completed
- Contractors will make a second pass of debris removal on all roads
- The County will identify the need for additional debris removal programs ;
 - Waterways
 - Derelect Vessels
 - Parks
- Damage complaints will be signed-off when rectified

Activities include:

- Third and final pass of debris removal will be made
- Remaining damage complaints will be closed out
- Debris management sites will be remediated
- Contractors will be released

IMPORTANT NOTICE TO THE PUBLIC

- Hurricane Debris Removal Operations Complete for Most of Beaufort County
- ONLY storm debris from October 7 is allowed. CERES is seeing a trend of newer, “green” debris from routine landscape maintenance being set out for collection.



IMPORTANT NOTICE TO THE PUBLIC

- Beaufort County advises residents to immediately **STOP** placing debris at the right-of-way. If you have not placed your debris at the right of way it is too late and the property owner is responsible for removal and proper disposal of any debris. The third and final pass began in most of Beaufort County on Tuesday, Jan. 3. Debris placed at the right-of-way after the third pass is complete for any area will not be picked up by County contractors and is prohibited by FEMA regulations and federal law. Contractors will continue picking up debris previously identified by the debris monitoring firm to complete the third pass in specific areas only.



Public and Private Road Debris

- Residents are asked to sort Class 1 and Class 2 debris into separate piles on the right-of-way at their residence for collection. The separation categories for debris placed at rights-of-way are:
 - Class 1 waste – includes small limbs, leaves and landscape trimmings.
 - Class 2 waste – includes building materials, drywall, lumber, carpet, furniture, mattresses and plumbing items.
- The County advises residents not to block fire hydrants, stormwater ditches or utility boxes when placing items at the right-of-way



Convenience Centers

- All Beaufort County Convenience Centers are accepting limited amounts of non-storm generated yard waste (Class 1)
- Class 1 waste accepted at Convenience Centers includes small limbs and landscape trimmings. Capacity for this material is limited. No trailers or large loads will be accepted. Residents who wish to drop off waste in bags should use paper bags. Plastic bags are prohibited



Private Road Debris (PPDR)

- On October 29, 2016, FEMA approved the County's request to remove debris from private roads
- As of Feb. 10, 2017, FEMA has approved private roads in 76 communities for PPDR. 1 others are pending approval. None to be submitted. 4 withdrawals. 3 denied (driveways)



PPDR as of Feb. 10, 2017

- Battery Point
- Battery Townhomes
- Bay Pointe Vistas
- Beach Field
- Bermuda Bluff
- Bloody Point
- Blue Gray Estate
- Bluffton Park
- Callawassie Island
- Cane Island Retreat
- Cat Island
- Cedar Cove at Haig Point
- Cedar Lake
- Celadon
- Cheechessee Creek
- City Walk
- Coffin Point Plantation
- Colleton River
- Coosaw Point
- Dataw Island
- Distant Island
- Edgefield
- Fernlakes
- Fripp Island POA
- Haig Point Club
- Harbor Island
- Heritage Lakes
- Heyward Point
- Hidden Lakes
- Inlet @ Bermuda Bluff
- Islands of Beaufort
- Liberty Point
- Live Oaks at Battery Creek
- Marshes at Lady's Island
- May River Plantation
- May River Preserve
- Melrose Resort
- Meridian Cottages
- Moss Creek
- Oakridge
- Olde Tabby Park
- Oldfield
- Overlook at Battery Creek
- Picket Fences
- Pinckney Retreat
- Pine Forest Village
- Pleasant Farm
- Pleasant Point
- Polawana Island
- Port Royal Landing
- Ribaut Island
- River House Plantation
- River Oaks
- Rose Dhu Creek
- Rose Hill Plantation
- Sandy Pointe
- Shady Glen
- Shammy Creek Landing
- South Point
- Spring Island
- Stock Farm
- Tabby Road
- Tansi Village
- The Crescent
- The Farm at Buckwalter
- Traditions at Old Carolina
- Tuxedo Park
- Victoria Bluff
- Vivian's Island
- Walling Grove
- Wellstone at Bluffton
- Willow Point
- Windmill Harbour
- Wrights Point
- Yacht Club Estate



Pending PPDR 2/10/17

Pending FEMA:

- Palmetto Place

- Withdrawn:

- Hampton Hall Club
- Old Point Townhouse Condo Assoc.
- Shadow Moss
- Westgate Circle

Denied by FEMA:

- Fig Beach Club
- Mariner Horizontal Property
- The Preserve at Woodbridge

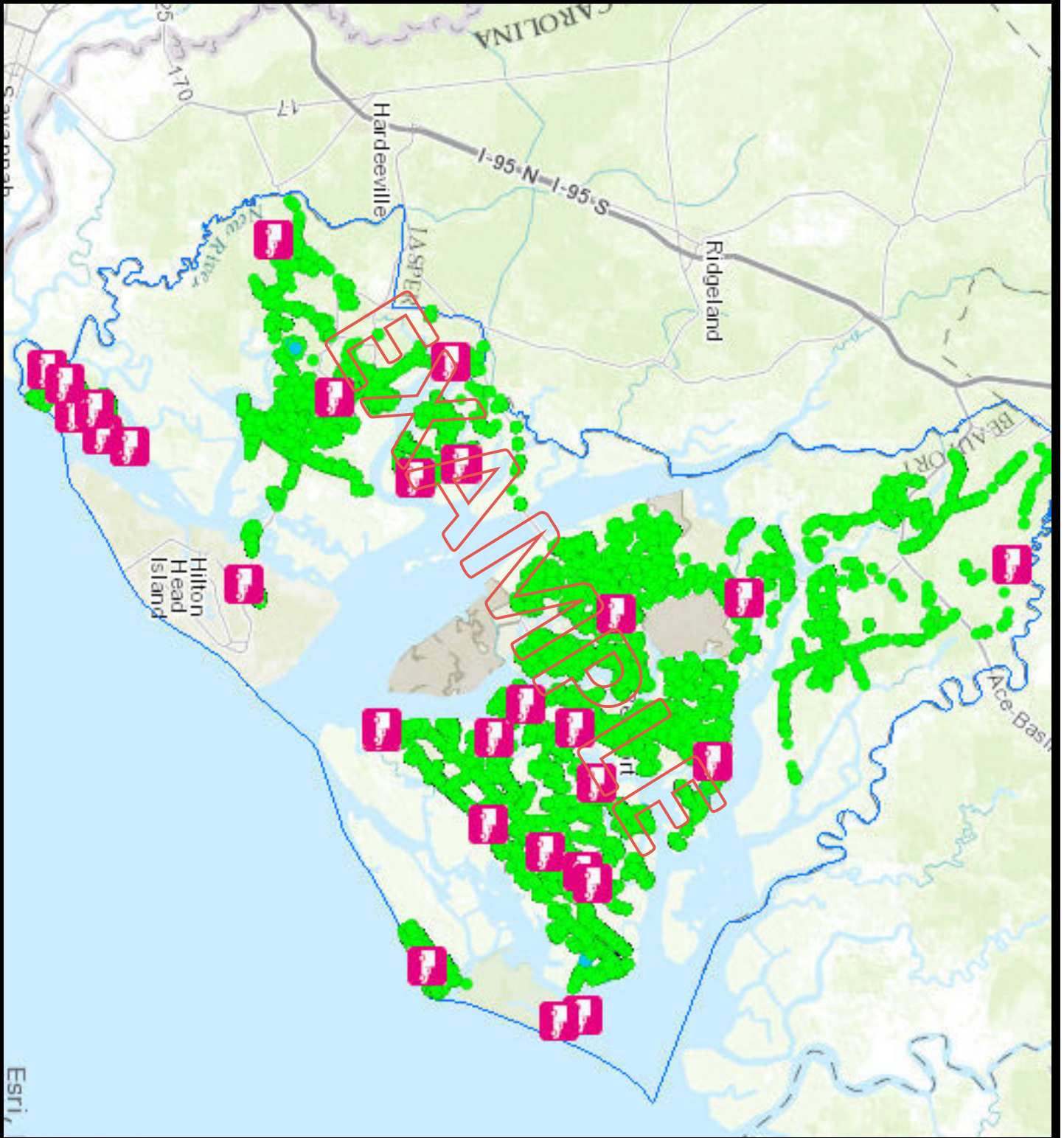
- Yet to be submitted to FEMA:
 - None



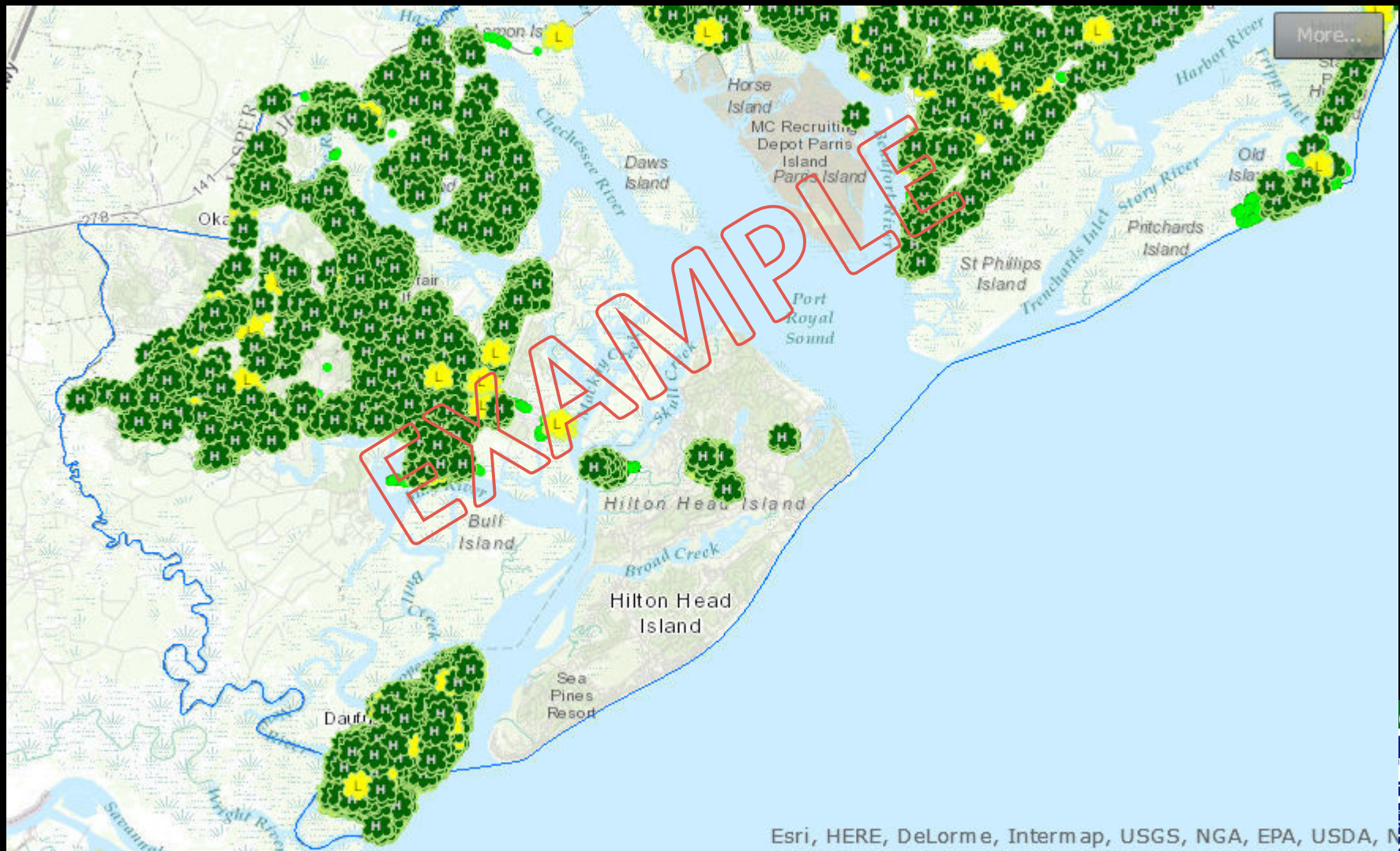
PPDR status 2/10/17

- January 23, 2017, CERES switches to a “punch list” system for collecting in these communities
- The County is divided into 74 similarly sized zones:
 - 33 zones completed
 - 35 zones have punch lists to be completed
 - 6 zones are still active with 2nd/3rd passes

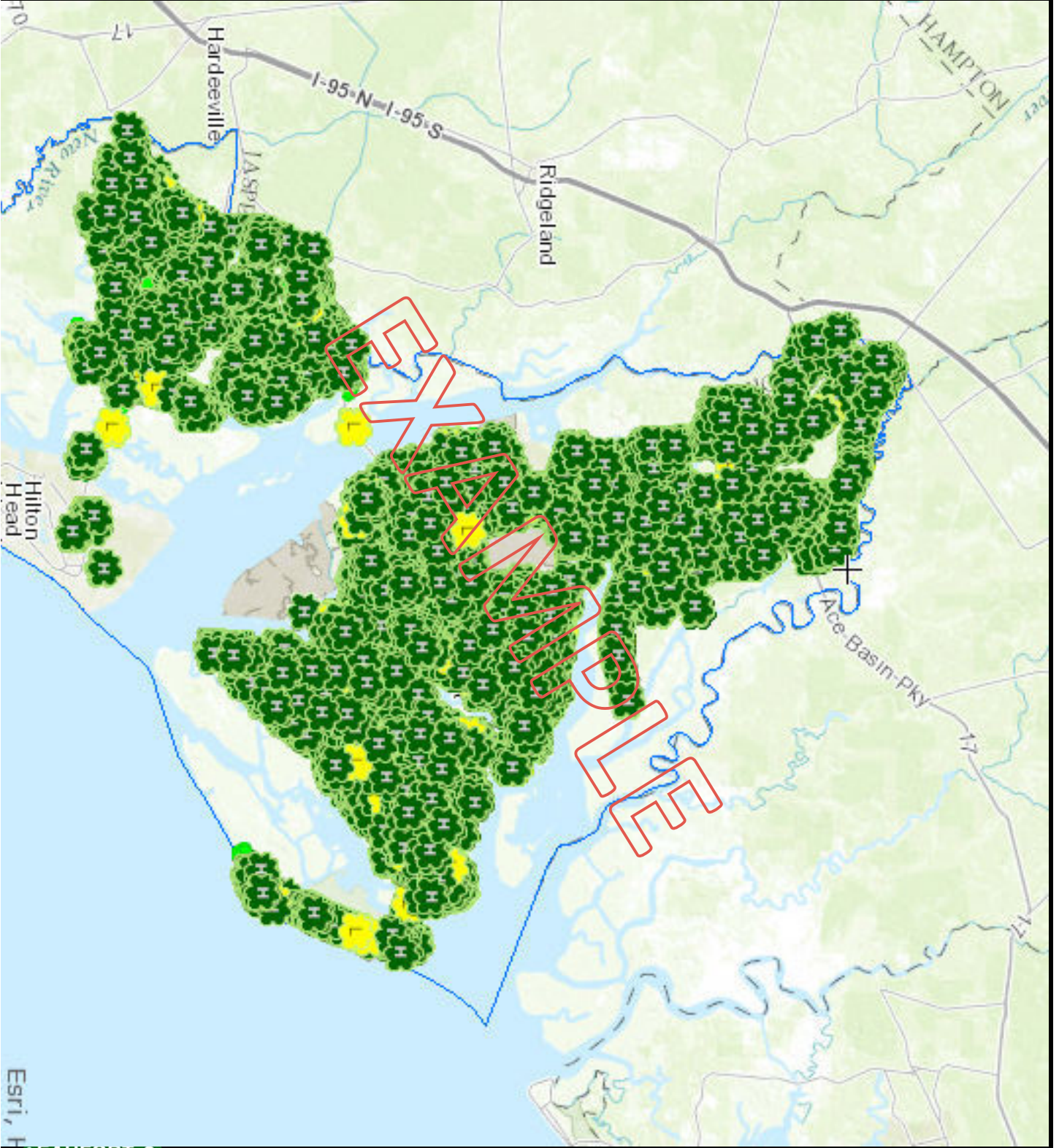




“Hangers”, “Leaners”, & Stumps



Esri, HERE, DeLorme, Intermap, USGS, NGA, EPA, USDA, N



Stumps

- Inventory complete
 - Two categories (within ROW):
 - Extracted = 160
 - In place = 100
 - FEMA advised County all stumps are eligible for removal on January 13, 2017
- Cost is included in current task orders
- Actual Number exceeded 1,000 stumps (see debris report)



PPDR non-eligible debris piles

Below is the list with estimated quantities reviewed by CERES

- Fripp Island - approximately 4000 yards of debris
- Dataw Island - approximately 10,000 yards of mulch
- Moss Creek - approximately 8,500 yards of mulch, and 5,750 yards of stumps and very large logs
- Rose Hill - approximately 750 yards of stumps and logs that previous contractor could not grind and approximately 500 yards of brush



Marine Debris

- Boats, Docks, other debris obstructing the navigable waters
- The County questioned if this is the responsibility of the County, SC-DNR, SC-DHEC/OCRM, SC-EMD, or USACE
 - Both SC-EMD and FEMA are working with the County for answers
 - Both DNR and DHEC have sent letters to SC-EMD stating the responsibility is not theirs
 - Jan. 31, 2017 - County received an opinion from the Attorney General's office stating the County has a legal responsibility to remove debris between Low and High tide, the Marsh
 - Additional clarification on the navigable waterways is still needed
 - The County is getting guidance on how to request approval from FEMA to begin work

Marine Debris action to date

- SC-DNR and US Coast Guard did hazard removal in the navigable channels in the first days after the storm
- Efforts are ongoing by DNR to identify and inventory the vessels and debris
- County is currently advertising for bids.
Activating the mutual aid agreement with ToHHI is another option. SC-EMD and FEMA have stated we cannot change order the task to CERES.
 - Cost to remove is unknown at this time



MS4 Infrastructure Debris

- Fallen trees, woody debris washed into and blocking ditches and pipes within County maintained easements
- Identification and Inventory is complete
 - NRCS staff on site today and tomorrow for assessment
 - Cost estimate \$524,036
- Pursuing USDA funding prior to submittal to FEMA as part of Public Assistance. Application was submitted on January 23, 2017
 - Allows 100% reimbursement for monitoring up to 7.5% of debris cost
- Follows same time frame as other debris
 - If awarded USDA funding, we have 220 days from the date of the agreement

MS4 Infrastructure Debris

DISTRICT	Lady's Island	Port Royal Island (North)	Port Royal Island (South)	Sheldon	St. Helena	Bluffton	
Number of Downed Trees	30	100	57	40	107	15	Total = 249 Trees Down
Workshelf with Downed Trees	12,735ft	51,943ft	18,059ft	67,372ft	42,487ft	2,312ft	Total = 36.92 Miles

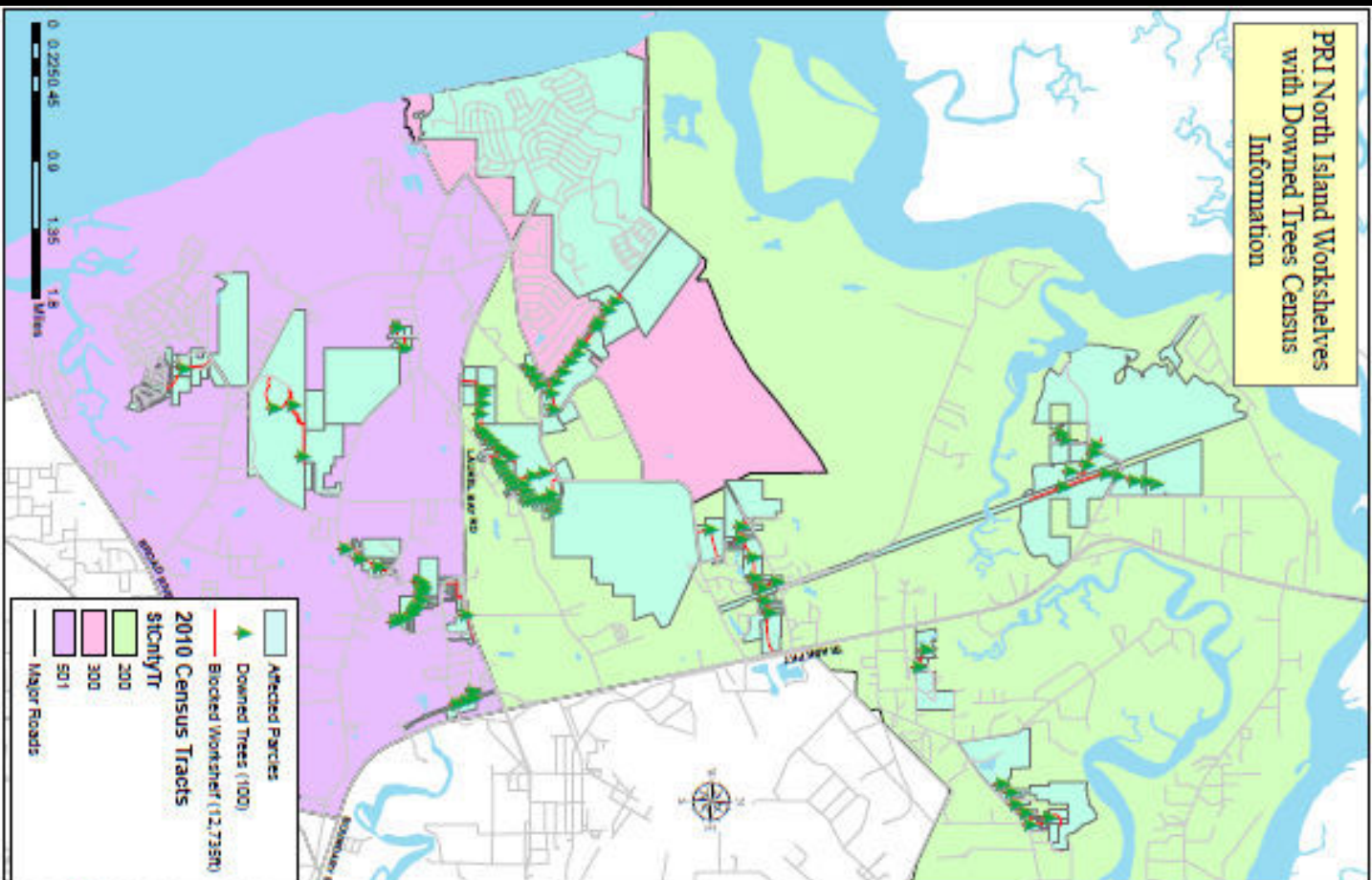
- In-house crews have performed limited work in clearing; likely will assist CERES in certain areas
- CERES to take over and complete
- Grant pending approval/denial by USDA



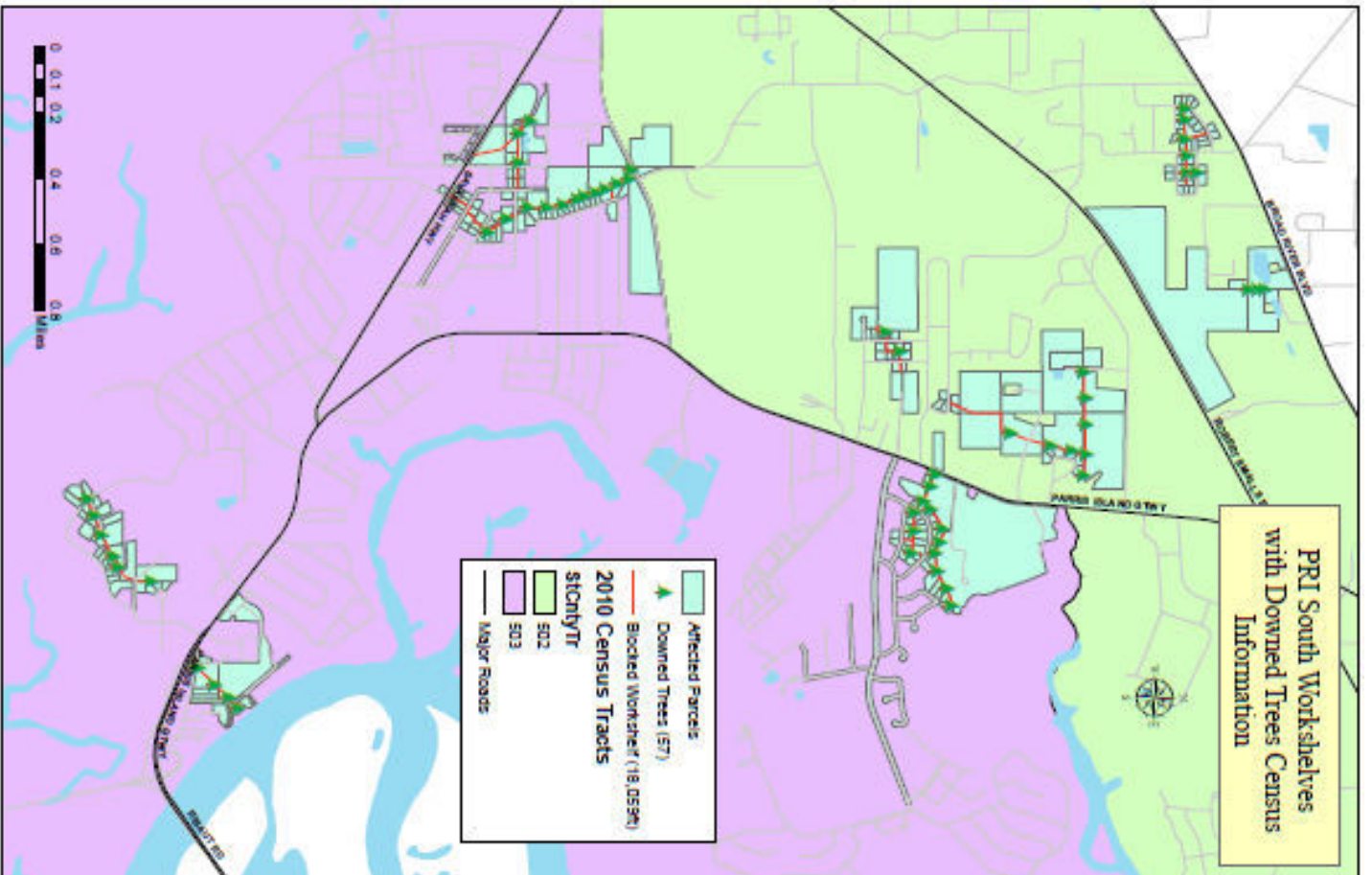
Lady's Island Workshelves with Downed Trees Census Information



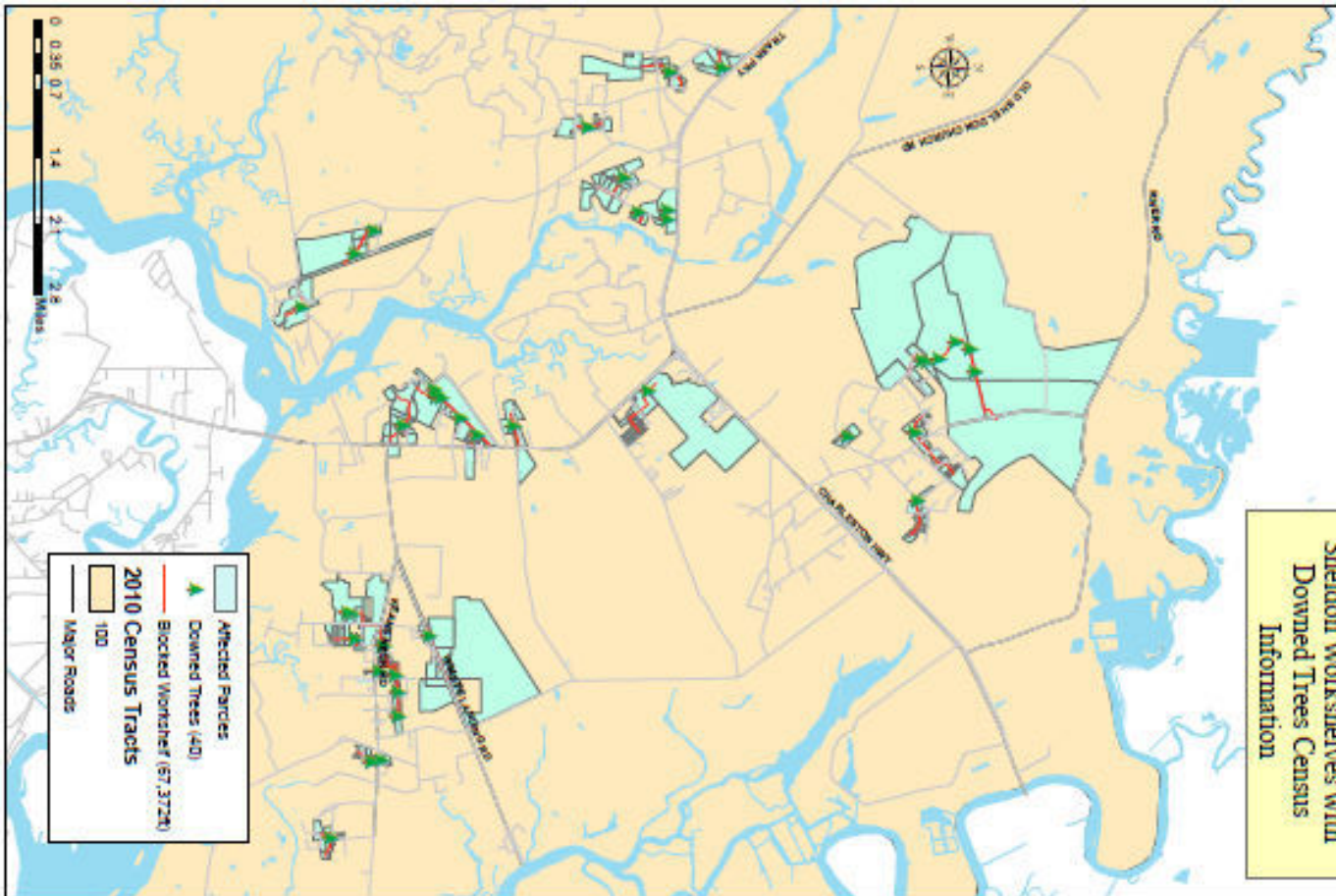
PR1 North Island Workshelves with Downed Trees Census Information



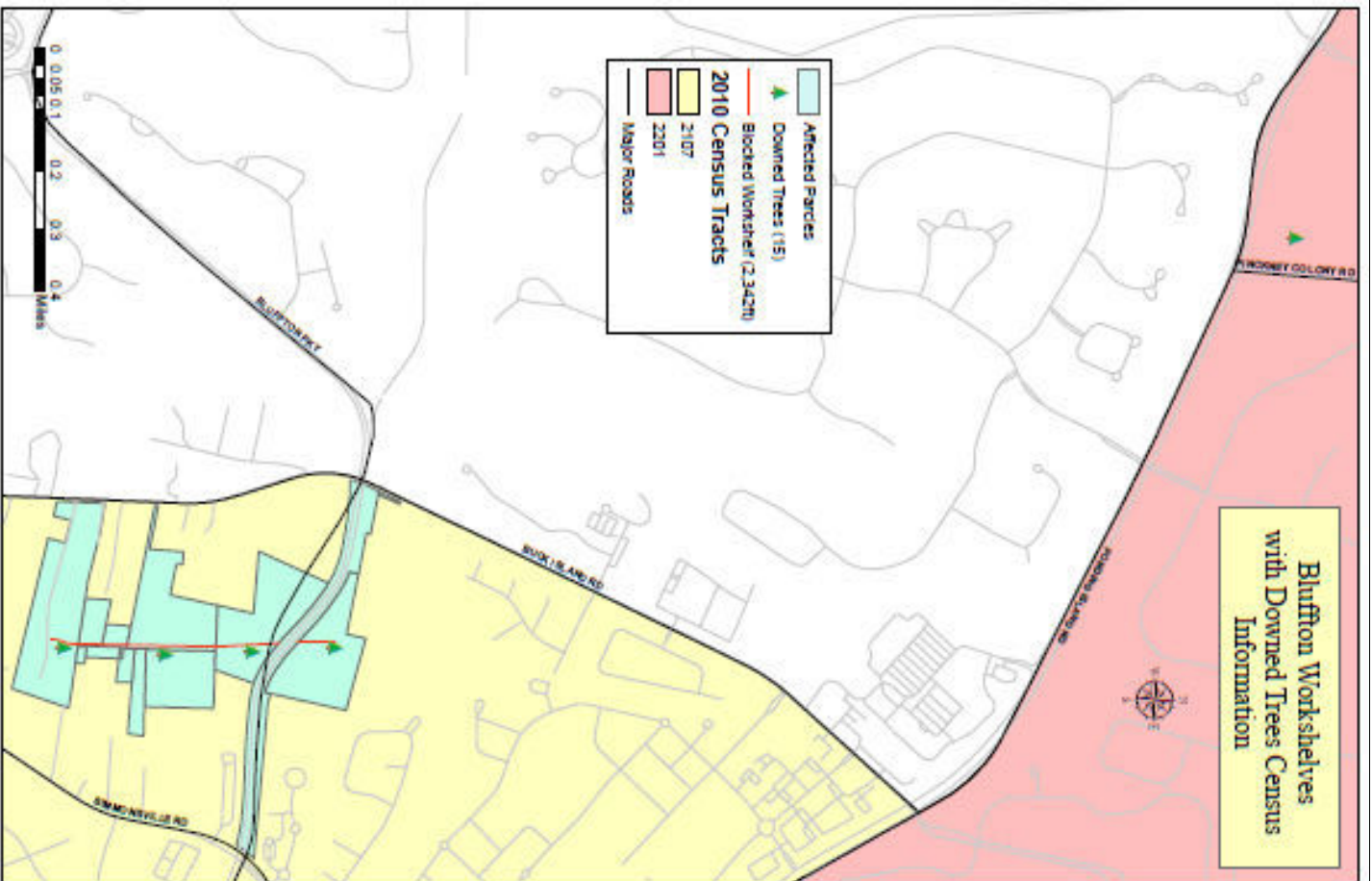
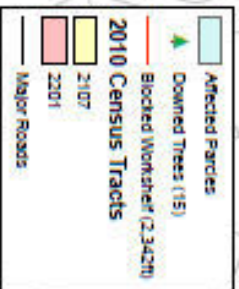
PRJ South Workshelves
with Downed Trees Census
Information



Sheldon Workshelves with Downed Trees Census Information



Bluffton Workshelves with Downed Trees Census Information



FEMA reimbursement Program

- The County is participating in a newer pilot debris program by FEMA
- Increases percentage of reimbursement during the first 90 days (85% first 30 days, 80% next 60 days, then 75% up to 180 days)
- Since DHEC and FEMA approved our debris plan in advance of the event, it increases reimbursement by 2%



Damage Assessment

- As of November 10, 2016 w/ Feb. 13, 2017 update:
- Countywide assessment is complete
- 1,055 parcels with damage (excl. HHI)
 - 71 with damaged structures >50% (excl. HHI)
- Estimated cost \$34,108,749
 - Does not include ToHHI's 19,688 parcels inspected. These numbers will not be available until next year when annual permitting reports are available to value cost of all permitted repairs
- County Building Inspection has issued 356 emergency related permits (414 building, 52 electrical)



Town of Hilton Head Island Damage

- As of Feb. 8, 2017:
- Assessment is complete
- 2,858 parcels with damage
 - 30 with damaged structures >50%
- Estimated cost \$74,786,792
- Town Building Inspection has issued 832 emergency related permits to date



Damage Assessment - Beaufort County

(Final Estimates Through 11/10/2016)

Location	Structures w/ Major Damage		
	All Parcels Damaged	Damage (>50%)	Damage (\$\$)
Unincorporated Burton/Beaufort	132	11	\$ 3,399,522
Bluffton/Okatie (Town & Unincorporated)	219	9	\$ 6,867,950
Town Of Port Royal	68	4	\$ 1,976,771
St. Helena	193	15	\$ 4,382,225
Sheldon	20	0	\$ 711,330
Lady's Island	124	11	\$ 7,174,925
Fripp Island	49	8	\$ 1,728,400
Daufuskie	16	5	\$ 1,642,500
City Of Beaufort	234	8	\$ 6,225,126
Hilton Head (Residential)	2792	28	\$ 69,113,792
Hilton Head (Initial Commercial/Businesses)	66	2	\$ 5,673,000
TOTAL	3913	101	\$ 108,895,541

NOTE 1: Damage Assessment is complete in all parts of the County

County Facilities (1/20/17)

- Facilities Management reported damage to 178 separate facilities / structures / grounds
- Much of the work was done by staff
 - Cost summary is pending
- Staff working with Insurance Reserve Fund prior to submittal to FEMA for Public Assistance
- Debris on sites being cleared by Public Works, Grounds, and/or the County's contractor
 - Cost included in Debris Removal costs



Beaufort County Facility Management
Facility Inventory
 Updated 1/20/2017

#	Facility	Location	Description	Damage to Building	Damage to Grounds
1	John Galt Road	18 John Galt Road	office-Cameron Extension		
2	A. Home Building	104 Ribaut Road, Beaufort	Single story building		
3	A. Home Nature Park	2540 Ashtree Drive, Beaufort	Pavement Park		Debris needs to be removed and trees down.
4	Administration Building	100 Ribaut Road, Beaufort	Multi-story bldg	Wet carpet & ceiling tiles in Registrar of Deeds, Assessor's Office, Employee Services and Building Codes.	Sharpers needs to be removed
5	Agnes Major Community Center	21 Agnes Major Road,	Single story bldg, ball fields		
6	Alley Boat Landing	206 Alley Road	Boat Landing/boat system		
7	Alumina	141 Blalock Road	Pavement Park		Trees down at the back of the Park.
8	Arenal Shelter	25 Shelter Church Road, Beaufort	Single story building	Leak near HVAC vent	
9	Arenal Shelter Oak Building	25 Shelter Church Road, Beaufort	Single story building		
10	Arenal Shelter Clinic	25 Shelter Church Road, Beaufort	Single story building		
11	Arenal Shelter Dog Building	25 Shelter Church Road, Beaufort	Single story building		
12	Baker/Tina Storage Building	108 Shardin Road	Ball fields, concession stands, restrooms	Restroom ceiling/water damage Fence Damage	4 sharpers needs to be removed
13	Barker Field	70 Bargar Road, HH			
14	Barnes Landing	Near McHenry's Corner	Boat and Critical Launch		
15	Beal Green Complex	1900 Rodgers Street	Ball fields, restrooms, concession stand	Shingle/tear paper missing from dugouts	
16	Bethany Creek High School Pool	One Blue Dolphin Drive, Beaufort	pool		
17	Beaufort County Court Center South	530 William Hilton Parkway			
18	Beaufort High School Pool	64 Sea Island Parkway, Beaufort	pool		
19	Beaufort Library	311 Scott Street, Beaufort	Multi-story bldg		
20	Beaufort Tennis Courts	1105 Bladen Street	Tennis Courts, restrooms	terrace walls are down	
21	BOV #6-Traffic Eng. Rm. Myrtle	113 Industrial Village Road, Beaufort	2 story bldg, walk on grade		
22	BOV #1-Engineering	104 Beaufort Industrial Road	single story bldg, walk on grade		
23	BOV #11-Finance, Purchasing, Risk Mgmt.	106 Beaufort Industrial Road	single story bldg, walk on grade		
24	BOV 1-Staff only, Cameron Extension	102 Burton Hill Road, Beaufort	single story bldg, walk on grade		
25	BOV 1-Volunteers Registration	15 John Galt Road, Beaufort	Single story building		

Beaufort County Facility Management

Facility Inventory
Updated 1/20/2017

#	Facility	Location	Description	Damage to Building	Damage to Grounds
26	Surfmen LIME	2 Bridge Street, Surfmen			
27	Surfmen Fuel Stop	25 Burton Field Road, Surfmen	Abundant's Office, canopy		
28	Surfmen Gym	61 Ulmer Road, Surfmen		Tree on edge of roof, tree removed 2 metal sun shades torn off by wind. Sun shade on left side fallen, ceiling tiles wet, tree on fence	2 aloe vera needs to be removed
29	Surfmen Library	120 Pamlico Way, Surfmen			
30	Surfmen Media	61 Ulmer Road, Surfmen		Fence Damage	
31	Surfmen Pool	55 Pinckney Farm Road, Surfmen			
32	Surfmen Public Works	9 Burton Field Road, Surfmen		Tree on fence - removed, fence damaged	
33	Surfmen Pump House	Ulmer Road			
34	Surfmen Storage Building	Ulmer Road	Ball field, concession stands, restrooms		
35	Bob Jones Field	2712 Jones Avenue	Single story bldg, basketball court, playground		
36	Booker T. Washington Center	122 Booker T. Washington Circle			
37	Beckford Creek Landing	275 Beckford Pl, Hixid	Boat Landing		
38	Stratford State Park	4 Highway, Hixid	State Park		Beckford State Park trees down, damaged
39	Grand River Boat Landing	1060 Robert Smalls Parkway	Boat Landing		
40	Grand River Pier	1000 Robert Smalls Parkway			
41	Grand River Restrooms	1060 Robert Smalls Parkway	Restrooms at pier		
42	SHOC-Reedford Recovery Operation Center	Hampton, SC			
43	Brownfield Community Center	200 Beckford River Road, Reedford	Single story bldg, ball fields, dugout	Front door broken/window pane broken	
44	Bruce Edgely Field	719 16th Street, Port Royal	Ball field, restrooms		Bump and lefty pole needs removing
45	Burroughs Boat Landing	55 Fording Island Road East	Boat Landing		Trees down
46	Buckwater Park	905 Buckwater Parkway	Restroom, concessions		Buckwater Swamp Trail closing
47	Buckwater Parkway	Buckwater Parkway	15 miles of parkway		Trees down in the median
48	Buckwater River Center	905 Buckwater Parkway			
49	Buddy Lubertson Von Harten Landing	40 Station Creek Road	Boat Landing/boat system/House		
50	Burton Wells Complex	1 Middleton Recreation Drive	Ball field, concession, restrooms, building		

Beaufort County Facility Management
 Facility Inventory
 Updated 1/20/2017

#	Facility	Location	Description	Damage to Building	Damage to Grounds
51	Barton Wells Lake	600 Barton Wells Road	bagged pond, trail fields, concave stands, restrooms	Palm tree leaning against restroom roof fence damage	Tree trunk needs to be removed and debris.
52	Barton Wells Park	600 Barton Wells Road			
53	Barton Wells Park Restroom, press box, concessions	1 Middleton Recreation Drive			
54	Beaufort Island Landing	110 Blatch's Road	Boat Landing		Beaufort Island debris
55	C.C. Huggins, Jr. Boat Landing	1640 Fording Island Road Ext.	Boat Landing/berth/boat system		
56	Camp St. Mary's	1119 Camp St. Mary's Road	4 structures		Tree trunk down, stumps and debris
57	Chapin Park	111 Crabtree, Hilton Head Island, SC	4 buildings and ball field		Debris
58	Coffin Point Drop Off Center	110 Cane Cane Road	Single story building		
59	Coopers Community Center	1440 Coopers River Drive	Single story bldg, playground		
60	Corcoran Office	1804 Old Shell Road, Port Royal	single story	Tree limb damaged a down spout on building	
61	Courthouse	1100 Ribault Road, Beaufort	Multi-story bldg		
62	Courtesy Care Park	110 Springfield Rd, Beaufort, SC 29907		Fence damage	Tree and stumps needs to be removed
63	Cross Island Boat Landing	600 Halseman Way	Boat Landing/berth/boat system		Debris needs to be removed.
64	Croswells Park	4 Hagg Point Court, HH	Ball field, concave, restrooms	Fence Damage	Tree trunk, debris and stumps needs to be removed
65	Cryder Lake	124 Lady's Island Drive, LI 29907	Pavilion Park, building		
66	Cuffy Drop Off Center	150 Cuffy Road	Single story building, single story BGS, ball fields, restrooms, ball court		
67	Dale Community Center	115 Community Center Road			
68	Daufuske Island Boat Landing	13 Hagg Point	Boat Landing/boat system		
69	Daufuske Island Restrooms	New River			
70	Daufuske Island Shore	New River			
71	Dal Webb Fire Station	25 William Pope Drive, Hilton Head			
72	Deaton Center	1100 Ribault Road, Beaufort	Multi-story bldg		
73	DNA Lab Sheriff's Office	111 Lockstar Village Road	Offices		
74	DSH Broad River Residence	400 Broad River Drive, Beaufort	single story residence		
75	DSH Choke	3 Choke's Way	single story residence		

Beaufort County Facility Management

Facility Inventory
Updated 1/20/2017

#	Facility	Location	Description	Damage to Building	Damage to Grounds
76	02N Chamber Admin Building	100 Clear Water Way			
77	02N Chamber Main Building	100 Clear Water Way	02N office		
78	02N Cottage Walk	18 Cottage Walk	02N Residential house		
79	02N Fraser Drive	324 Fraser Drive		Tree is leaning on fence, damaged	
80	02N Lakes Crossing	79 Lakes Crossing Blvd., Bluffton			
81	02N Lake Capers	290 Lake Capers Road	single story residence		
82	02N Office	1804 Old Shell Road, Port Royal	Single Story Building		
83	02N Palmetto Ridge (property only)	2012 Palmetto Ridge Street, Beaufort	Property only		
84	02N Payton	9 Payton Way	single story residence	Tree on roof, removed, roof damage	Shingles need to be removed
85	02N Pineland	210 Pineland Circle, Bluffton, SC			
86	02N poetry Building	100 Clear Water Way			
87	02N Pier 1st Boat Landing	188 Edsall Pt. Road	Boat Landing		
88	02N Pier Boat Landing	306 Ocala Highway	Boat Landing/Boat system		
89	02N Maintenance Office	142 Shands Road, Beaufort	Single Story		Fac maintenance office has leaning
90	02N Courthouse	1901 Bay Street, Beaufort	Multi-story bldg. Leased to St. Elena		
91	02N Piermont	51 Helena Island			Chairs needs to be removed, slumps
92	02N Manager's Office	Shands Road			
93	02N Pier Site	Shands Road	4 pump-out		
94	02N Drop Office Center	130 Castle Rock Road, Beaufort	Single story building		
95	02N Pier Landing	306 Carpenter Road	Boat Landing/Boat system		
96	02N Maintenance Office	136 Shands Road, Beaufort	Single Story	Building flooded, water damage, tile damage	
97	H. E. Threlk, Sr. Boat Landing	325 Stewart Creek Road	Boat Landing/Boat system		
98	Health Center	808 Wilmington Street, Beaufort			
99	Health Center/DHEC	1407 King Street, Beaufort			
100	104 Island Library	11 Beach City Road, Hilton Head			Shingles needs to be removed

Beaufort County Facility Management

Facility Inventory
Updated 1/20/2017

#	Facility	Location	Description	Damage to Building	Damage to Grounds
101	H&H Airport Hangar	120 Beach City Road, H&H			
102	H&H Airport Terminal	120 Beach City Road, H&H		Roof soffit section missing	
103	H&H Airport Tower	120 Beach City Road, H&H			
104	H&H Island Airport CR II	120 Beach City Road, H&H			
105	H&H Island Government Center	530 William Hilton Parkway			Chairs from entrance needs to be removed
106	Hilton Head Park	150 William Hilton Parkway, H&H	2 tennis courts, basketball court	Fence damage.	Chairs from basketball court area needs to be removed.
107	Harmon Services Building	1905 Oak Street, Beaufort	Multi-story bldg		
108	Lady's Island Airport Hangars	41 Airport Circle		One foot damage from water intrusion/light vault water damage ceiling/water damage, extensive damage to building, runway lighting damage	
109	Lady's Island Airport Terminal	41 Airport Circle			
110	Law Enforcement Center/EOC	2001 Oak Street, Beaufort	Multi-story bldg	Light pole damaged, back door closer damaged, fence damage.	
111	Larson Island-Midway Point	Southern Beaufort County	Beach and Critical Lands		
112	Larry Brown Center	41 Ball Park Road		Fence Damage.	
113	Lind Brown Community Center	1001 Marine Street, Beaufort	Open pool	Open has water on floor under air vent	
114	Lobeco Library	1802 Trask Parkway, Lobeco			Chairs needs to be removed.
115	Lobeco Drop Off Center	6 Keane Neck Road	Single story building, Concession Stand, restroom, ball fields		Chairs and tables
116	M.C. Riley Park	180 Cochrane Rd., Bluffton		Missing stringlines	
117	McClatchy Stewart Lobeco	1800 Trask Parkway			
118	Marine Rescue Squadron/Commission	817 Parris Ave., Port Royal, SC		Missing stringlines, ceiling leaks, soffit damage	
119	Marshall Landing	97 Marshland Road	Boat Landing/Boat system		
120	McCurvey's Corner	2205 Ochs Highway	Property only		Trees down
121	Mesa Field	1812 National Street	Ball fields		
122	Mesquite Central	84 Swards Road, Beaufort	Single story	Roof leaks	
123	Mesquite Central-Hwyer	39 Airport Circle		Carburetor gate has salt water damage	
124	Mesquite Central Water Shop	84 Swards Road, Beaufort		Roof leaks	
125	Mesquite Central West Shop	25 Airport Circle		water damage, extensive damage, fields office one foot of water in building	

Beaufort County Facility Management
 Facility Inventory
 Updated 1/20/2017

#	Facility	Location	Description	Damage to Building	Damage to Grounds
126	Wendell Corcoran-Chenail Storage	64 Shaville Road			
127	Medford Maintenance Shop	144 Shaville Road, Beaufort	Single story		
128	Myrtle Park	4019 Bluffton Parkway, Bluffton	Multi-story bldg.	Ceiling tile damage and exterior damage. Metal roof damage, ceiling tile water intrusion and wet carpet.	Two stump needs removing.
129	Old House Creek Pier	50 Starling Point Drive	Pier		Old House Creek Pier down and debris.
130	Once Frazier Park	77 Spauld Road, Bluffton, SC	500 tracks, concession stand, restrooms		Trees, stumps and debris.
131	Page Point Boat Landing	20 Page Point Landing Road	Boat Landing		
132	PALB Office	1514 Richmond Avenue, Port Royal	Single story bldg. with on grade	Tree on fence, fence is crushed.	
133	Parish Island Boat Landing	50 Marina Blvd.	Boat Landing/fuel system		
134	Pied Range	130 Shaville Road, Beaufort			
135	Port Royal	50 Sands Beach Road	Boat Landing/fuel system		
136	Pritchards Drop Off Center	54 Oshel Road	Single story building		
137	Public Works Building and Garage	120 Shaville Road, Beaufort	Single story	Building flooded, ceiling tile damage, floor tile damage, 7 offices	
138	Public Works Open Storage Building	120 Shaville Road, Beaufort		Skylight on roof of building is missing, roof damage	
139	Records Manager	2727 Depot Road			
140	Ross Point Boat Landing	15 Ross Pt. Landing Road	Boat Landing/fuel system		
141	Sams Point Boat Landing	1000 Sams Pt. Landing Road	Boat Landing/fuel system		
142	Scott Community Center	242 Scott Hill Road, St. Helena	Single story bldg. court, playground, ballfields	Fence down, tree on power box.	Debris needs removed.
143	Seaside Community Center	122 Seaside Road, St. Helena	Single story bldg. basketball court, playground		Debris and stumps needs removing.
144	Senior Citizens Center	1408 Parris Avenue, Port Royal		Debris on roof	
145	Senior Citizens Center-Burton Mills	2 Middleton Recreation Drive	Single story building		
146	Shaville Drop Off Center	60 Shaville Road Beaufort			
147	Shaville Drop Off Center (old)	132 Shaville Road, Beaufort	Single story building (closed)		
148	Shaville Drop Off Center	208 Page Point Road	Single story building		
149	Shell Point 600 Mgr Building/Power	59 Cleveland Drive, Beaufort	Re-hab 2011		
150	Shell Point Elementary Field	Seawatch Hwy (902), Bluffton	640 Fields, School lease		

Beaufort County Facility Management

Facility Inventory
Updated 1/20/2017

#	Facility	Location	Description	Damage to Building	Damage to Grounds
151	Shel Point Park	201 Broad River Drive	2 tennis courts, ball fields, restrooms		Tree trim required in entrance to park
152	Shel Point Property	6000 Ferns Island Gateway	Parcel of property		
153	Shel Point Responder Tower Building	19 Cedar Wood Street, Beaufort			
154	Shelby Annex	2727 Depot Road			Debris outside of fence needs removing, stump
155	Shelby Camp	1113 Chiswell Creek Blvd, Beaufort	One single story building		
156	Shelby Gym	2727 Depot Road			
157	Shelby Impound lot	134 Charlevoix Road			
158	Shelby Office Annex	1025 Duke Street, Beaufort	Single story building shared building	<u>Trees down, building damaged, fence damage.</u>	
159	Shelby Office Veto Hanger	221 Sea Island Parkway, LI		Molding metal wall panels damaged	
160	Shelby Office Spec Ops	1021 Oakes Highway	offices		
161	Shelby Storage	2727 Depot Road			
162	Somerset Drop Off Center	104 Elmwoodville Road			
163	Southern Tennis Courts	1407 Battery Creek Road	Tennis Courts, restrooms	Back board on tennis court tearing, fence damage, light poles are leaning	Debris needs removal, trees and shrubs
164	Spanish Moss Trail	Between Howards Hwy 200	1.5 miles	Numerous washouts	
165	St. Helena Drop Off Center	620 Sea Island Pkwy, Beaufort	Single story building		Debris at entrance needs removing.
166	St. Helena Library	6200 Jonathan Francis Dr. Road, St. Helena		Door to dumpster enclosure is damaged	Debris needs removing.
167	Station Creek House	26 Station Creek Drive		Roof damage, shingles missing	Station Creek debris
168	Steel Bridge Landing	9921 Charleston Hwy	Steel Landing/Water system		
169	Storm Water Building	1201 Charlevoix Road, Beaufort	Single Story Building		
170	Storm Water Building #2	1001 Charlevoix Road	Offices (old Council's Office)		
171	Sugar Hill Landing	40 Sugar Hill Landing Road	Steel Landing		Debris needs removing.
172	United Way Building				
173	Wallace Landing	246 Sam Doyle Drive	Steel Landing		
174	Warehouse	2727 Depot Road	Old Record's Management Building/Storage		
175	Warewide Storage	1678 Sea Island Hwy, St. Helena	Property only		

Beaufort County Facility Management

Facility Inventory/
Updated 1/20/2017

#	Facility	Location	Description	Damage to Building	Damage to Grounds
1762	Wesley Feltz Park - 32 Palmetto Park	1385 Bluff Park Road - 32 Palmetto Dr.	Ball Field, restroom, concession stand	Fence damage	Drill's Area needs renovation
1777	White Hall Landing	33 Sea Island Parkway	Boat Landing/Boat system		
1778	Winshaw Landing	550 Winshaw Landing Road	Boat Landing/pier		

Public Assistance (PA) Projects

- The following list of projects has been submitted to FEMA for consideration under PA during our “kick off” meeting 11/10/16:
- Debris Removal - \$26,755,562
 - Paid out \$3,985,537
 - Pending payment \$8,173,752
- Emergency Response - \$2.5 million
- Facility damage
 - Boat ramp damage
 - Recreational Facilities
- Road damage



Significant PA projects

- Lady's Island Airport Terminal, Hangers, and Airfield - \$ 404,391 (does not include Mosq. Control hanger and contents, and additional Terminal repairs, & additional Sheriff's Hanger repairs)
- Flyover approach embankment erosion & Spanish Moss Trail causeway erosion - \$597,905
- Boat Ramp Repair - \$184,996



Significant PA projects

- Central Drive causeway - \$1.33 million
 - Central Drive Repairs awarded on Nov. 22, 2016 to Andrews Engineering, J.H. Heirs, and O'Quinn Marine team. Completion by May 21, 2017

Projected: \$35 million

cost share \$10-15 million

Total to date: \$31,792,854

25% = \$7.9 million

Paid to date = \$6,833,369

Encumbered: \$30.7 million



County Operations

- The following departments and agencies with recovery functions have reported “normal operations”
- Animal Services
- Mortuary Services
- Schools
- EMS
- PALS (although they continue to assist HSA)
- Utilities
- Planning and Zoning



County Operations

- The following departments and agencies with recovery functions are still managing Hurricane Recovery:
- Public Works
- Stormwater
- Facilities Management
- Engineering
- Building Inspection
- Assessor's Office
- Legal / Finance / Admin.
- Communications



Public Information

- Website has the most current staff reports and data

www.beaufortcountyperformance.net

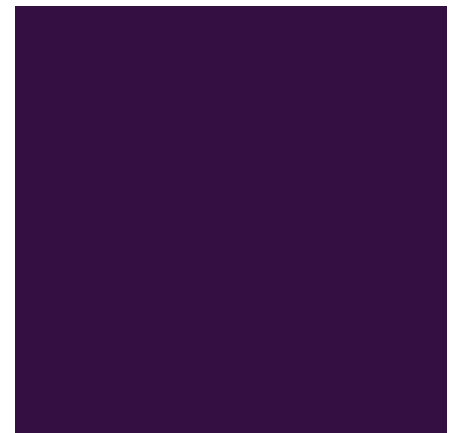
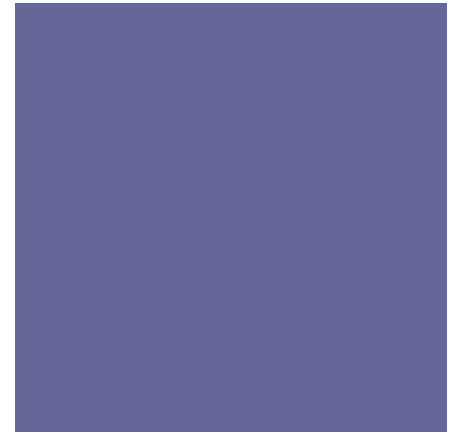
- Staff continue to update WebEOC, an internal program, on status, activity, needs, and damages. This will serve as documentation to FEMA for the storm event





Beaufort County Hurricane Matthew Recovery Briefing

Hilton Head Area Association of REALTORS
February 14, 2017

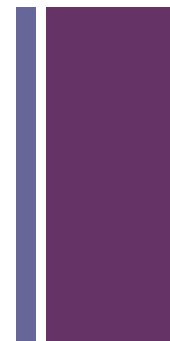


+ Individual Assistance (IA)

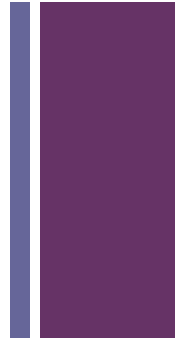
- FEMA's status:
 - Disaster Recovery Centers (DRC) now closed
 - Disaster Survivor Assistance (DSA) teams have ended operations
 - Deadline to register for IA has passed
- Citizens with registered cases can get updates on their cases by calling 1-800-621-3362 or go to www.disasterassistance.gov

+ “Long Term Recovery Team”

- Beaufort County Human Services Alliance (HSA) has partnered with United Way and numerous other NGOs to establish a long term recovery team within the framework of “Voluntary Organizations Active in Disaster” (VoAD).
- Citizens can call 843-524-HELP or 211 to seek assistance.
- Long term case management is a growing need. HSA is working to define a process to work with outside agencies to hand off cases when needed. SCEMD has hired an outside case management firm to assist if needed.



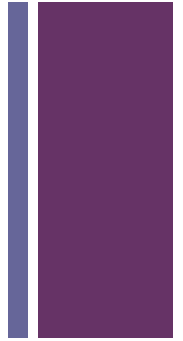
+ Human Services Alliance



- HSA, PALS, and United Way worked together to coordinate a donation drive for food, clothes, money, Christmas gifts. We received:
 - 10 bags of clothes
 - 2 bags of new toys
- Donations were distributed by Bluffton Self Help and HELP of Beaufort
- Volunteer groups and those offering free or discounted services should call United Way of the Lowcountry to register their resources.

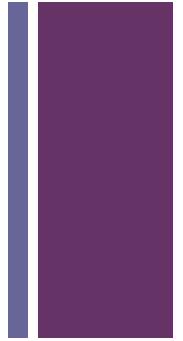
+ Volunteer groups and agencies with significant contributions

- United Way of the Lowcountry
- Beaufort County CERT
- Samaritan's Purse / Lowcountry Community Church
- Hilton Head Island Rotary Club
- Holy Family Catholic Church
- Praise Assembly
- Others



+ Human Service Alliance Stats

- Volunteers (Number of People): 914
- Time Dedicated to Hurricane Recovery Efforts (hours served): 12,250
- Case Load: 1,320
- Beaufort County Disaster Relief Fund:
 - Funds to date: \$36,768.25



+ Summary of HSA needs

United Way of the Lowcountry
Disaster Recovery – Community Needs
12/30/2016



<u>Referrals</u>	1225	<u>Number of unique callers</u>			1011	
Short-term housing	Tree removal from house	Utility	Emergency MRE's	Prescriptions		1 – appliances 1 – Painting 1 – load of fill dirt 9 – Thanksgiving 91 - Christmas 1 – Chemo 1 – House Fire 2 – Car payments 4 – Other County 12 – DRC's 2 – Moving a trailer 1 – set up costs for mobile home
81	60	159	11	9		
Long term housing	Tree leaning	Rental	Hot meals	Transportation		
45	61	114	32	13		
Storage Needs	Debris removal from yard	Clothing	Food Pantries	Gas		
12	96	42	196	10		
Movers	Home repair needs	Diapers/baby needs		Employment		
4	123	8		17		
	Water testing					
	4					
						128

+ Ongoing Needs

■ Home Repair

- Hilton Head Island, pockets of Bluffton, and isolated cases in Jasper County
- To volunteer or donate, contact The Deep Well Project at 843-785-2849.

■ Financial Need

- Related to past due utility bills and rent; loss of employment/wages; home repairs; and insurance deductibles
- To donate, contact United Way of the Lowcountry at 843-982-3040 or Community Foundation of the Lowcountry at (843) 681-9100.

