

BEAUFORT COUNTY, SC

FEMA-4286-DR | SC - HURRICANE MATTHEW

ROW COLLECTION

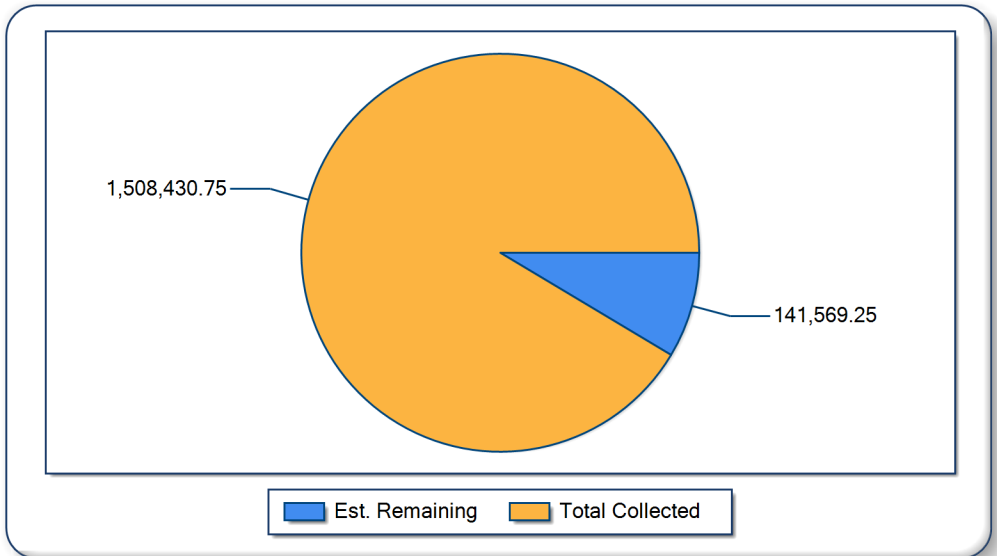
Daily Totals

Daily Statistics (02/23/2017)

CuYds Collected Vs. Remaining

Total Cubic Yards
VEGETATIVE/WOODY
Total Loads
Total Trucks Operating
Average CuYds Per Load
Average Load Call
Disposal Sites in Operation

6,410
6,410
129
18
49.69
79.69%
3



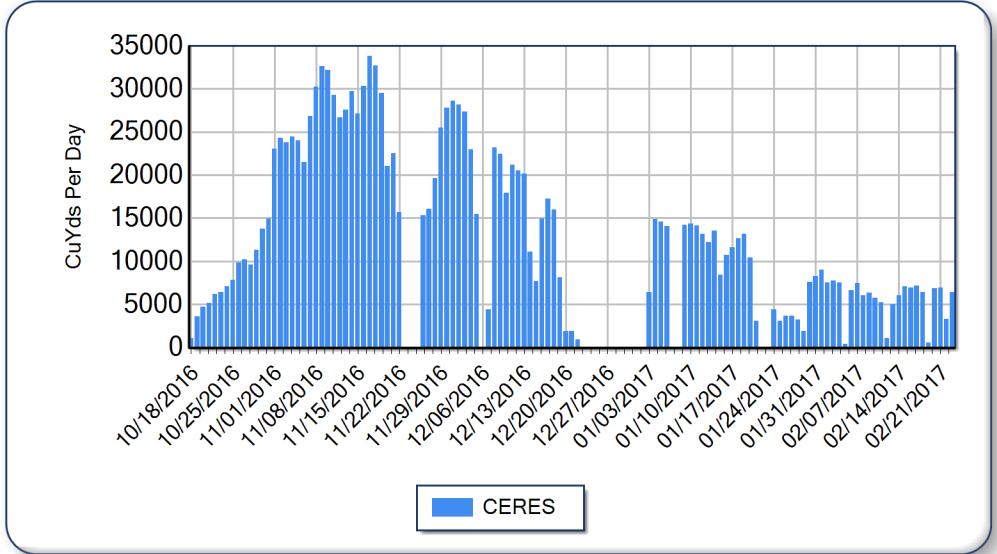
*All figures are estimates pending reconciliation

Project Totals

Job to Date Statistics

Total CuYds Per Day

Total Cubic Yards	1,508,431
Total Loads	31,062
Days Operational	110
Average Cubic Yards Per Load	49
Maximum Day Cubic Yards	33,776
Average Day Cubic Yards	13,713
Average Load Call	78.73%



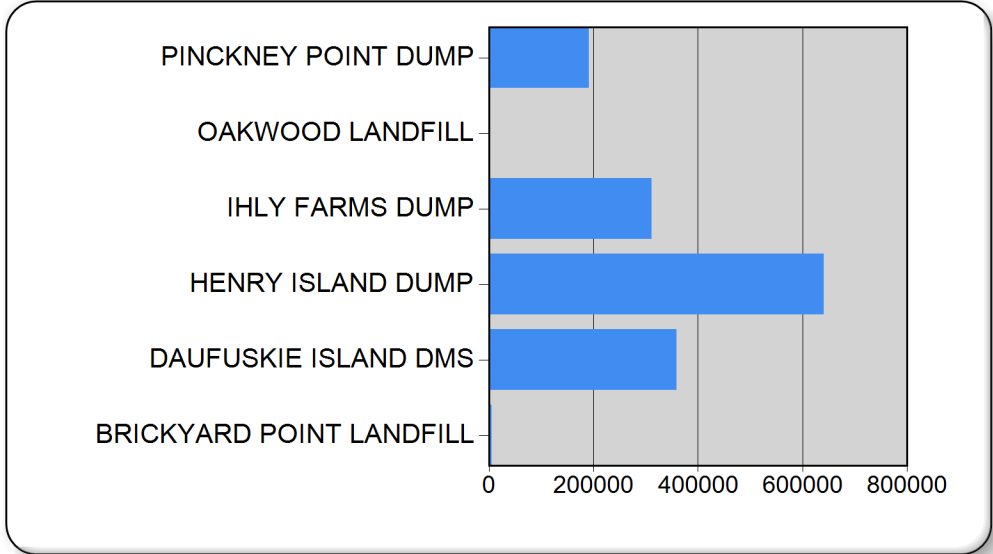
*All figures are estimates pending reconciliation

Debris Management Sites

Today and Job to Date DMS Statistics

DMS CuYds To Date

<u>Site Name</u>	<u>Today</u>	<u>JTD</u>
BRICKYARD POINT LANDFILL	0.0	4,902.9
CONSTRUCTION&DEMOLITION	0.0	4,902.9
DAUFUSKIE ISLAND DMS	5,090.1	358,880.6
VEGETATIVE/WOODY	5,090.1	358,880.6
HENRY ISLAND DUMP	1,052.8	640,490.6
VEGETATIVE/WOODY	1,052.8	640,490.6
IHLY FARMS DUMP	0.0	311,497.6
VEGETATIVE/WOODY	0.0	311,497.6
OAKWOOD LANDFILL	0.0	844.4
CONSTRUCTION&DEMOLITION	0.0	844.4
PINCKNEY POINT DUMP	266.7	191,814.8
VEGETATIVE/WOODY	266.7	191,814.8



*All figures are estimates pending reconciliation