

BEAUFORT COUNTY, SC

FEMA-4286-DR | SC - HURRICANE MATTHEW

ROW COLLECTION

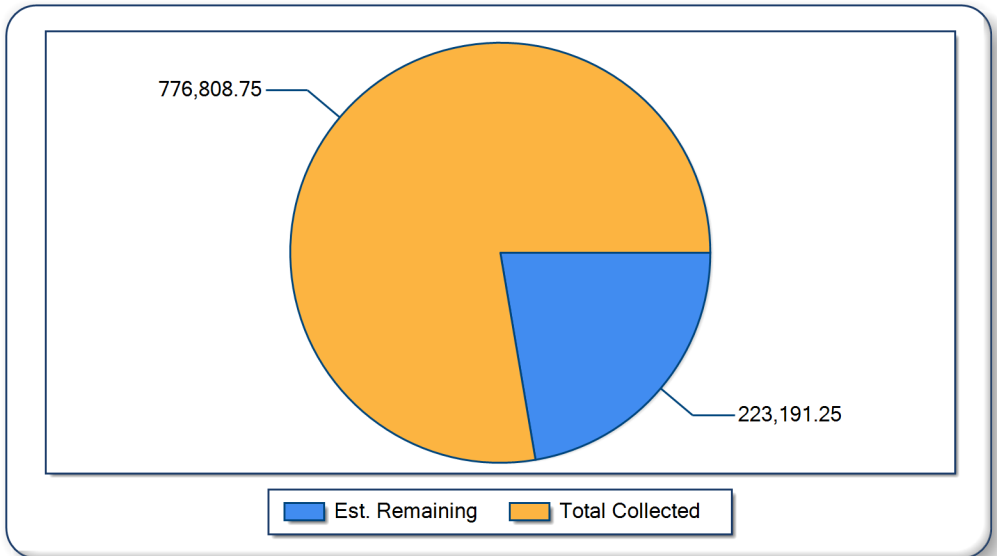
Daily Totals

Daily Statistics (11/29/2016)

CuYds Collected Vs. Remaining

Total Cubic Yards  
VEGETATIVE/WOODY  
Total Loads  
Total Trucks Operating  
Average CuYds Per Load  
Average Load Call  
Disposal Sites in Operation

25,499  
25,499  
529  
106  
48.20  
79.13%  
4



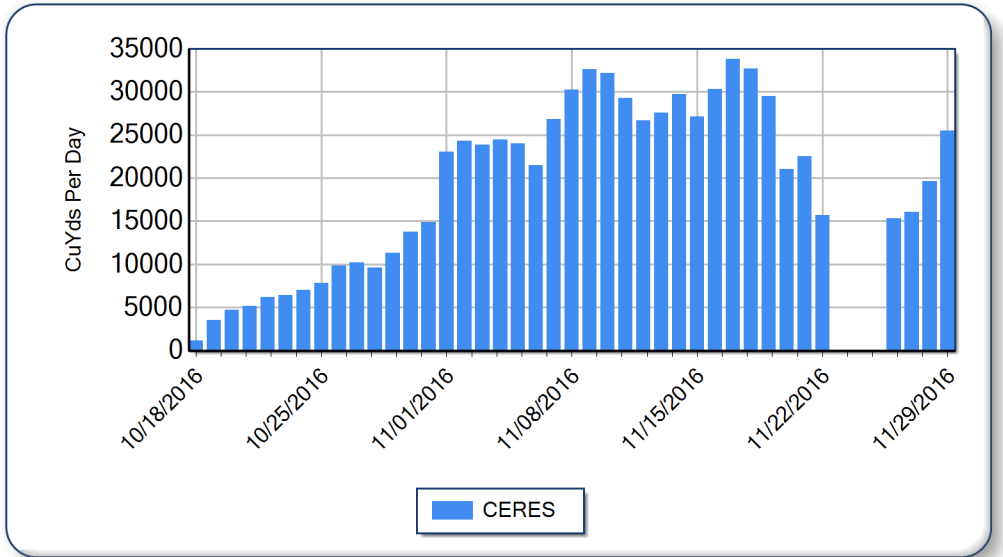
\*All figures are estimates pending reconciliation

Project Totals

Job to Date Statistics

Total CuYds Per Day

Total Cubic Yards	776,809
Total Loads	16,197
Days Operational	40
Average Cubic Yards Per Load	48
Maximum Day Cubic Yards	33,776
Average Day Cubic Yards	19,420
Average Load Call	79.10%



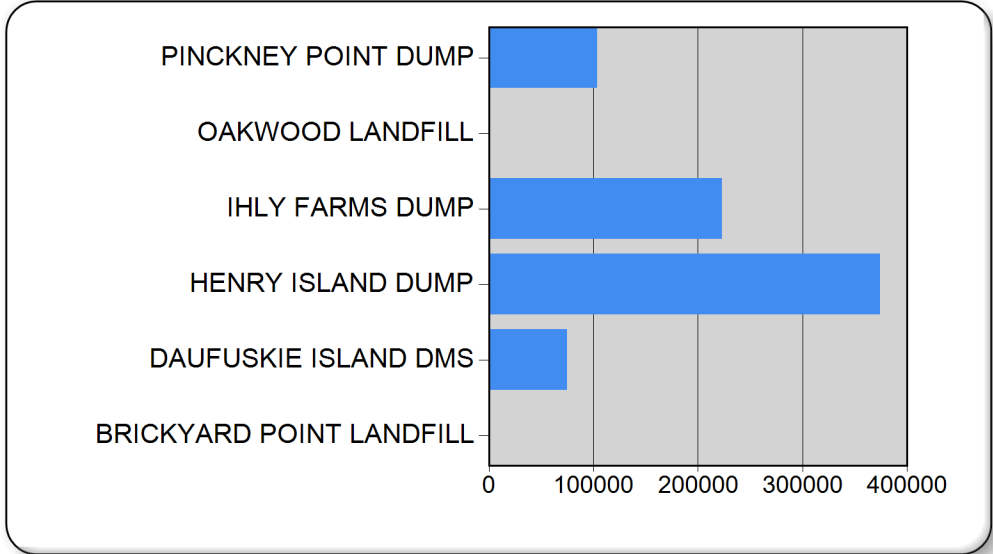
\*All figures are estimates pending reconciliation

Debris Management Sites

Today and Job to Date DMS Statistics

DMS CuYds To Date

<u>Site Name</u>	<u>Today</u>	<u>JTD</u>
<b>BRICKYARD POINT LANDFILL</b>	<b>0.0</b>	<b>857.7</b>
CONSTRUCTION&DEMOLITION	0.0	857.7
<b>DAUFUSKIE ISLAND DMS</b>	<b>3,943.9</b>	<b>75,076.9</b>
VEGETATIVE/WOODY	3,943.9	75,076.9
<b>HENRY ISLAND DUMP</b>	<b>13,055.9</b>	<b>373,923.2</b>
VEGETATIVE/WOODY	13,055.9	373,923.2
<b>IHLY FARMS DUMP</b>	<b>5,395.3</b>	<b>222,875.0</b>
VEGETATIVE/WOODY	5,395.3	222,875.0
<b>OAKWOOD LANDFILL</b>	<b>0.0</b>	<b>380.1</b>
CONSTRUCTION&DEMOLITION	0.0	380.1
<b>PINCKNEY POINT DUMP</b>	<b>3,104.1</b>	<b>103,696.0</b>
VEGETATIVE/WOODY	3,104.1	103,696.0



\*All figures are estimates pending reconciliation